

TEMPLE SINAI

Washington, DC

Facility Renovation and Expansion Project

Introduction + Discussion

WELCOME

ברוכים הבאים.



agenda

- welcome + introductions
- project overview
- construction considerations
- questions + discussion

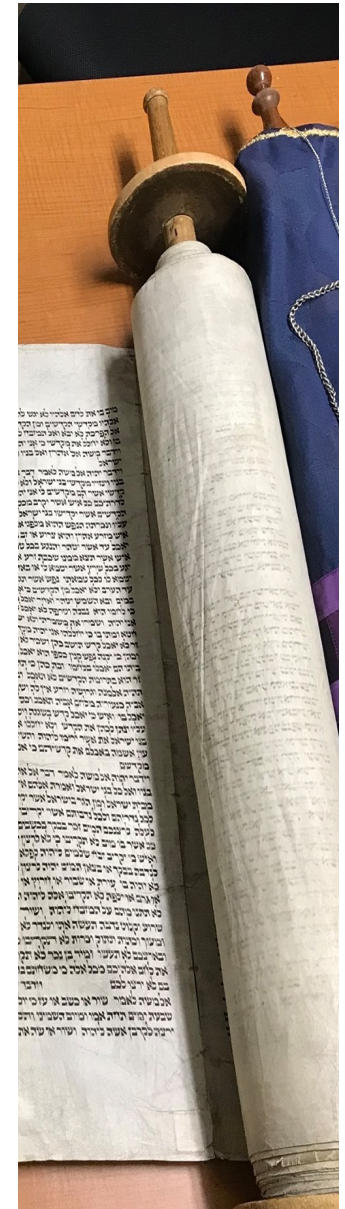
WELCOME

ברוכים הבאים.



TEMPLE SINAI

- who we are
- what we do
- why a building project



41 years

1981 - 2022

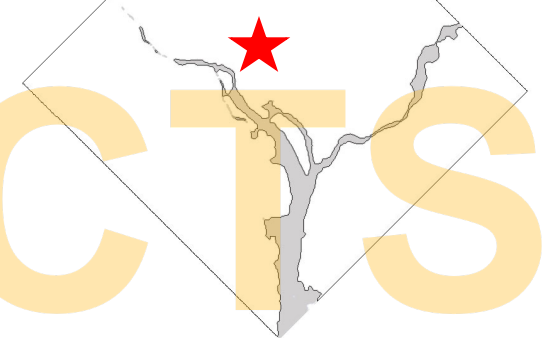
5 partners



32 employees



5.9



ARCHITECTS

cox graae + spack architects
washington, dc

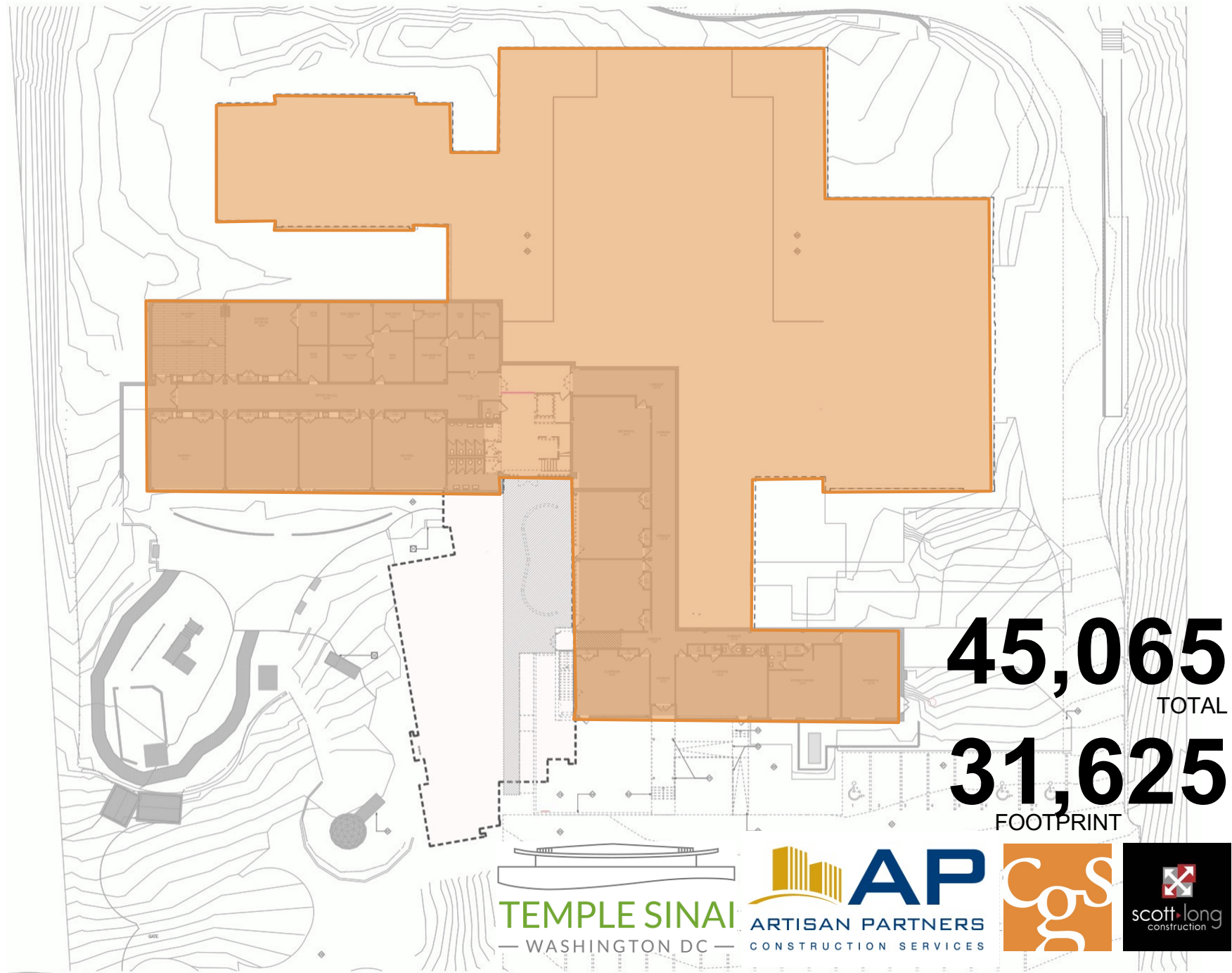


architecture for communities. **design for people**



cox graae + spack architects
washington, dc





45,065
TOTAL

31,625
FOOTPRINT

TEMPLE SINAI
— WASHINGTON DC —

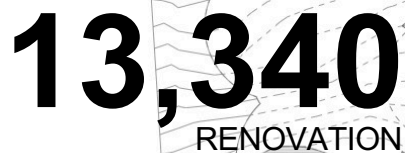
AP
ARTISAN PARTNERS
CONSTRUCTION SERVICES

cgs

scott long
construction



scott long
construction



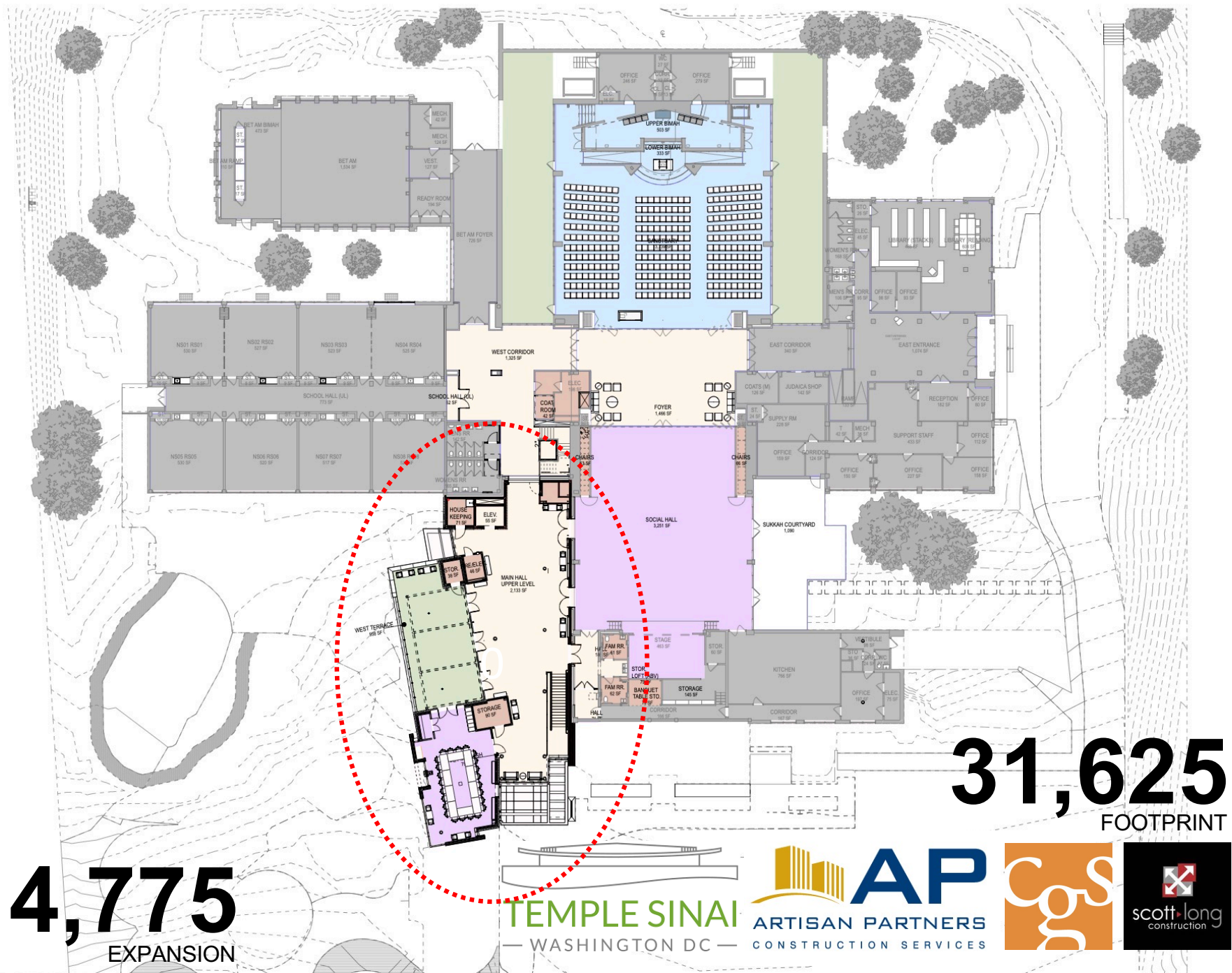
31,625
FOOTPRINT

TEMPLE SINAI
— WASHINGTON DC —



ARTISAN PARTNERS
CONSTRUCTION SERVICES







aerial view



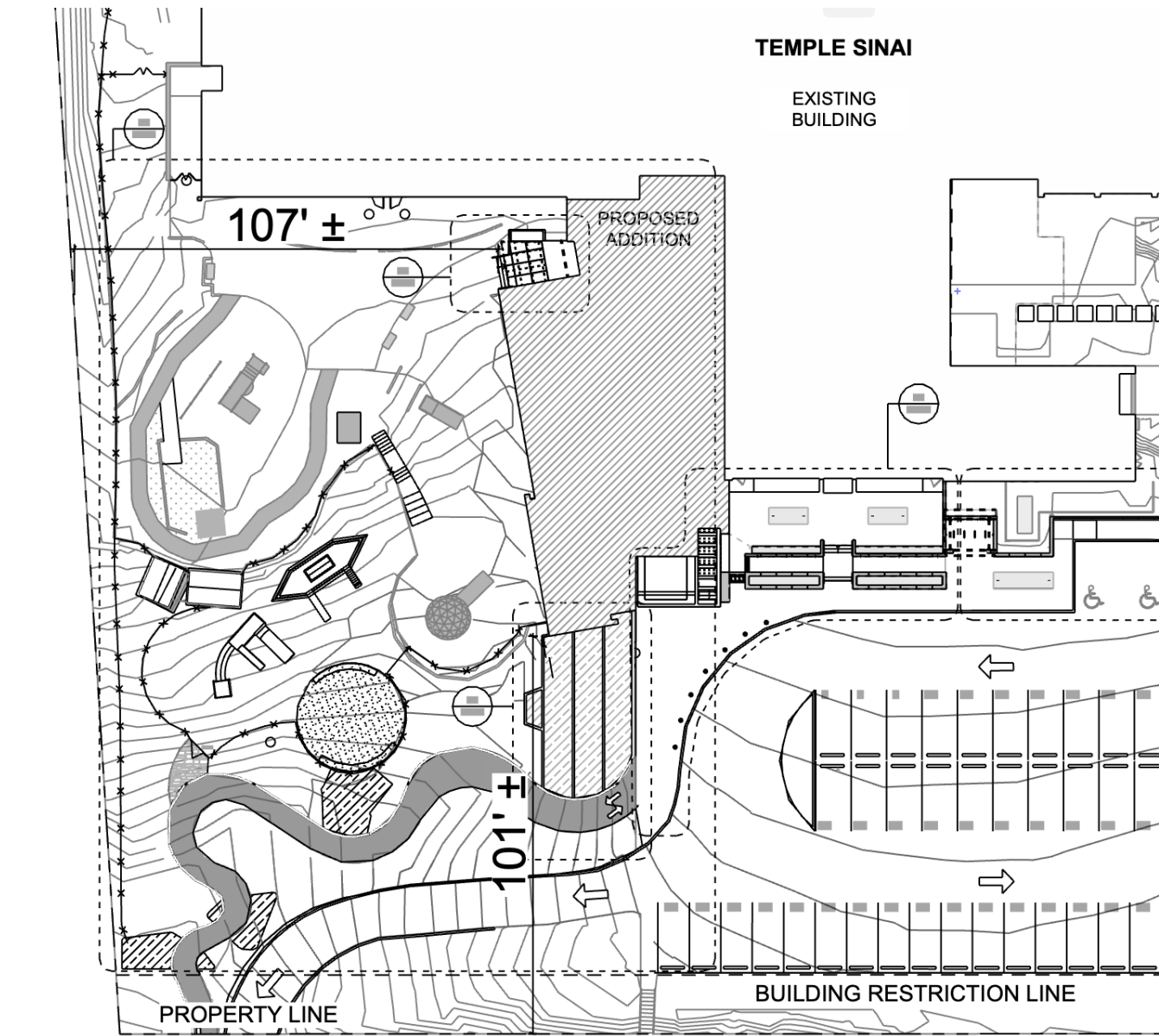


parking

52 spaces (three accessible)
covered bike parking

aerial view





JOCELYN STREET NW

TEMPLE SINAI
— WASHINGTON DC —

AP
ARTISAN PARTNERS
CONSTRUCTION SERVICES





entrance view

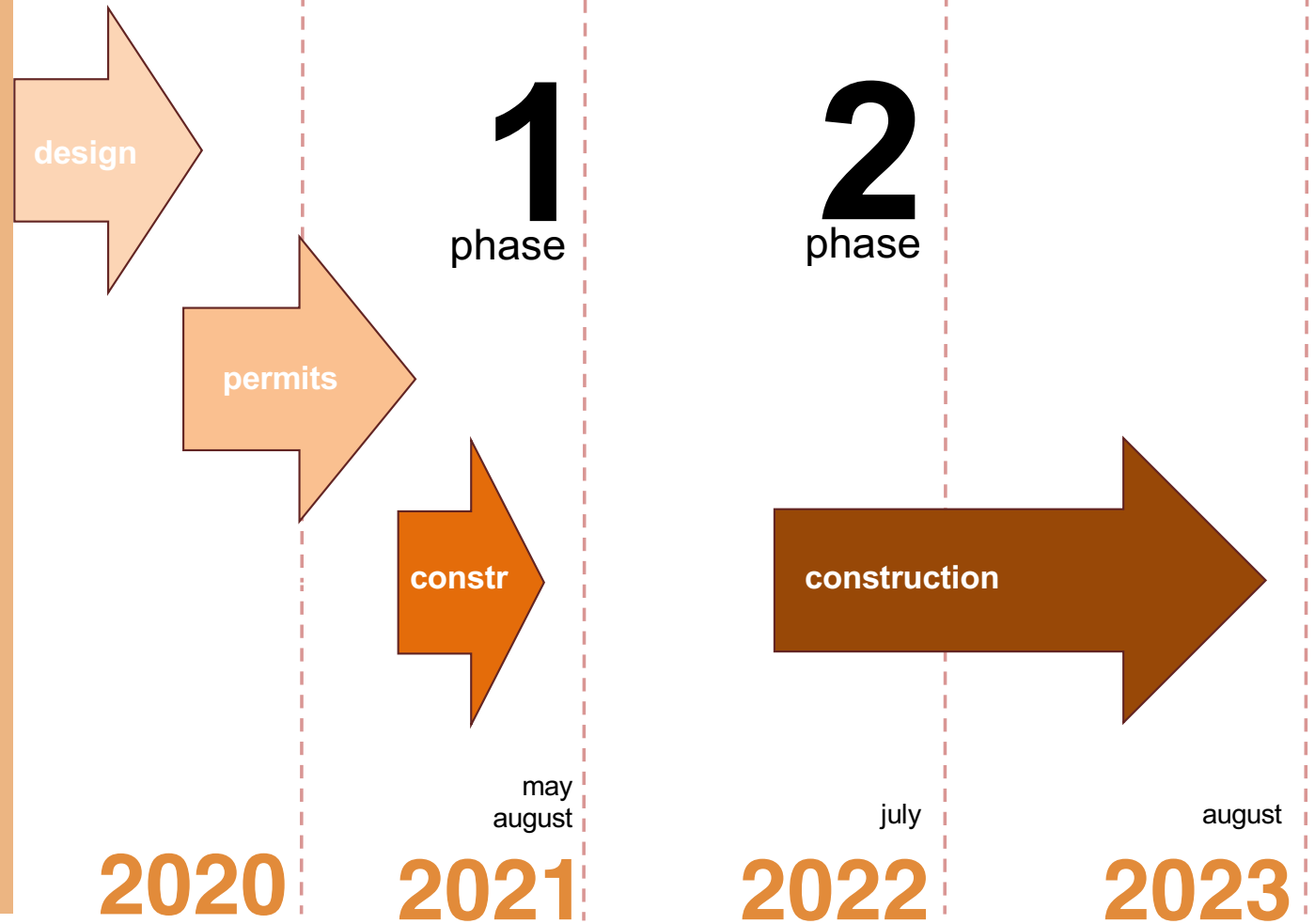




south-west view (elevated)



project timeline



A top-down photograph of various construction and safety items laid out on a dark wooden surface. On the left is a bright yellow hard hat. Below it are a pair of clear safety goggles with black straps. To the right of the hard hat is a pair of tan leather work gloves. Further right is a black headlamp with a white lens and a black strap. In the top right corner, a portion of a rolled-up white blueprint is visible, showing some technical drawings and the number '1001-4A'.

62

**years building local
Institutional projects**

**specialize in occupied and logistically
challenging work**

**150
75**

religious projects

employees

BUILDERS



A top-down view of various construction safety and management items laid out on a dark wooden surface. On the left is a large yellow hard hat. Below it are clear safety goggles. To the right of the hard hat are a pair of yellow work gloves. Further right is a black and white surveying level. At the bottom center is a pair of yellow safety glasses. At the bottom right are several white folding rulers. In the bottom right corner is the Scott Long Construction logo. The background is a dark, textured wooden surface.

Site Management and Logistics

Traffic Flow
Parking
Daily Work Hours
Erosion and Sediment Control



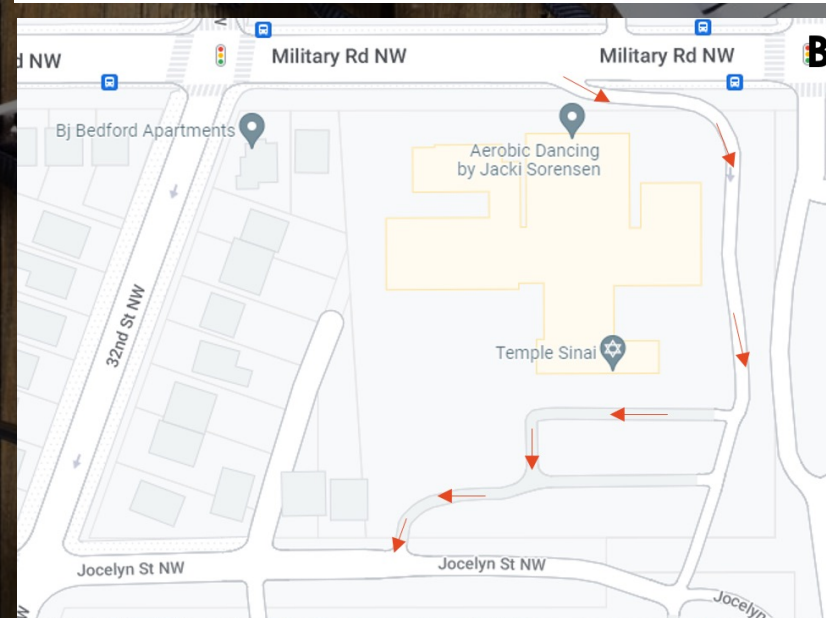
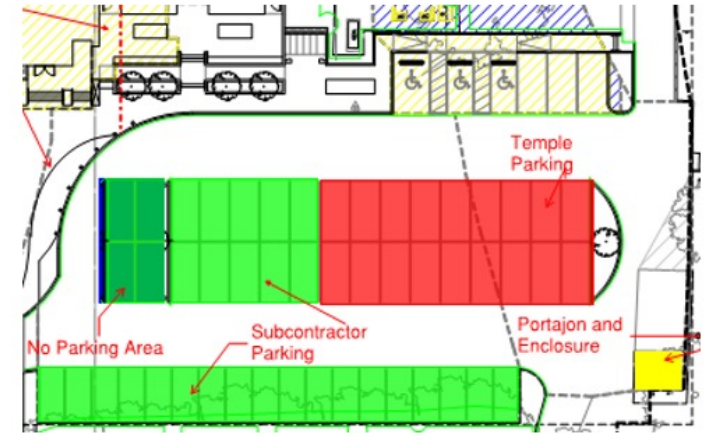
Traffic Flow and Parking

Scott Long is employing the following to control and manage daily traffic flow and parking.

- * During the summer months SLC and our subcontractors will use site parking as shown in detail A.
- * During the fall SLC will have subs shuttled from Wisconsin Ave. SLC will not allow any parking in the streets adjacent to the Temple.
- * All traffic on and off the property will continue in the direction currently established at the Temple. Subcontractors and vendors will enter via Military Rd and exit on Jocelyn. See detail B.

Traffic Control and Parking Lot Usage

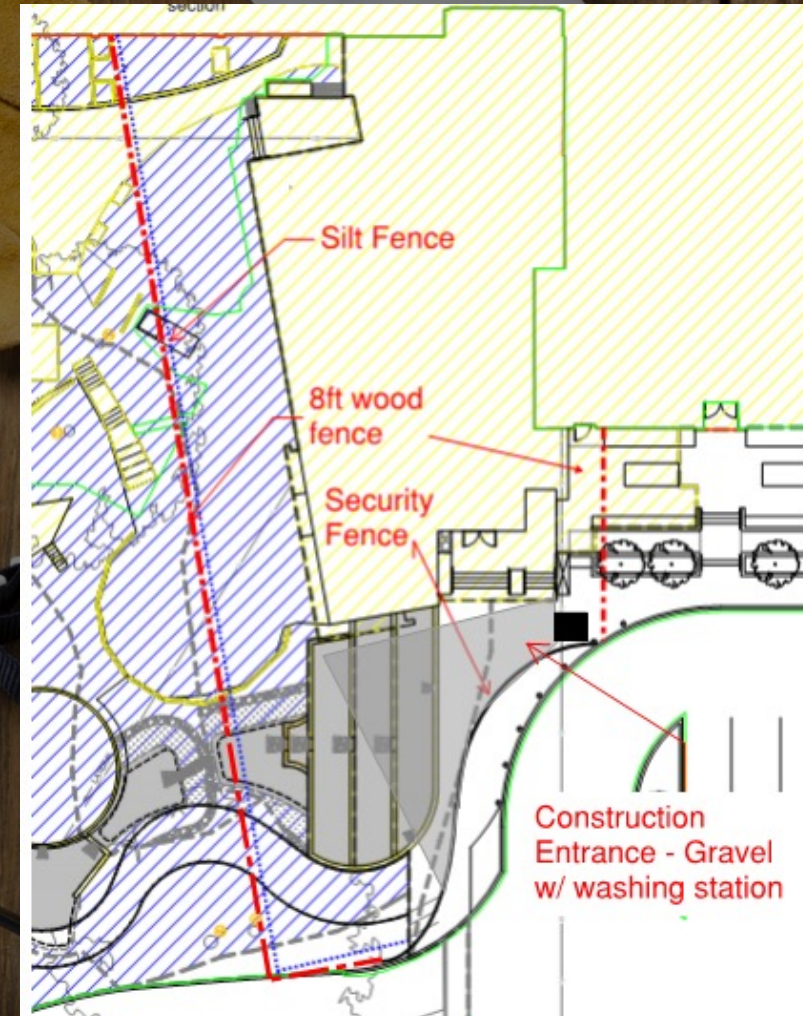
During the summer months traffic control will not be a primary project concern. SLC intends to use the rear parking lot as designated below unless otherwise noted during the summer months.



Daily Work Hours & Site Maintenance

- * Construction activities will generally occur between the hours of 7am and 5pm M-F.
- * No heavy equipment will be permitted to start and run before or after this time.
- * In accordance with our city approved civil drawings and E&S inspectors SLC will maintain the site to manage sediment controls. This will be managed through perimeter silt fence, construction entrances and site wash stations.

These measures ensure that project subcontractors do not track soil onto the streets adjacent to the temple. See the diagram for a general site layout.





QUESTIONS



contact email :

construction@templesinaidc.org

project updates :

<https://templesinaidc.org/construction/>



Thanks!

