

**Spring
2022**

**Project out for
Bids**

**Summer
2022**

**Site Fencing
Break Ground
Initial
playground
reconfiguration**

**Summer 2022 -
Summer 2023**

**Addition
continues
Select exterior
site-work
Classrooms
available
Sanctuary
remains open**

**Summer
2023**

**Complete
sitework
Other interior
renovations**

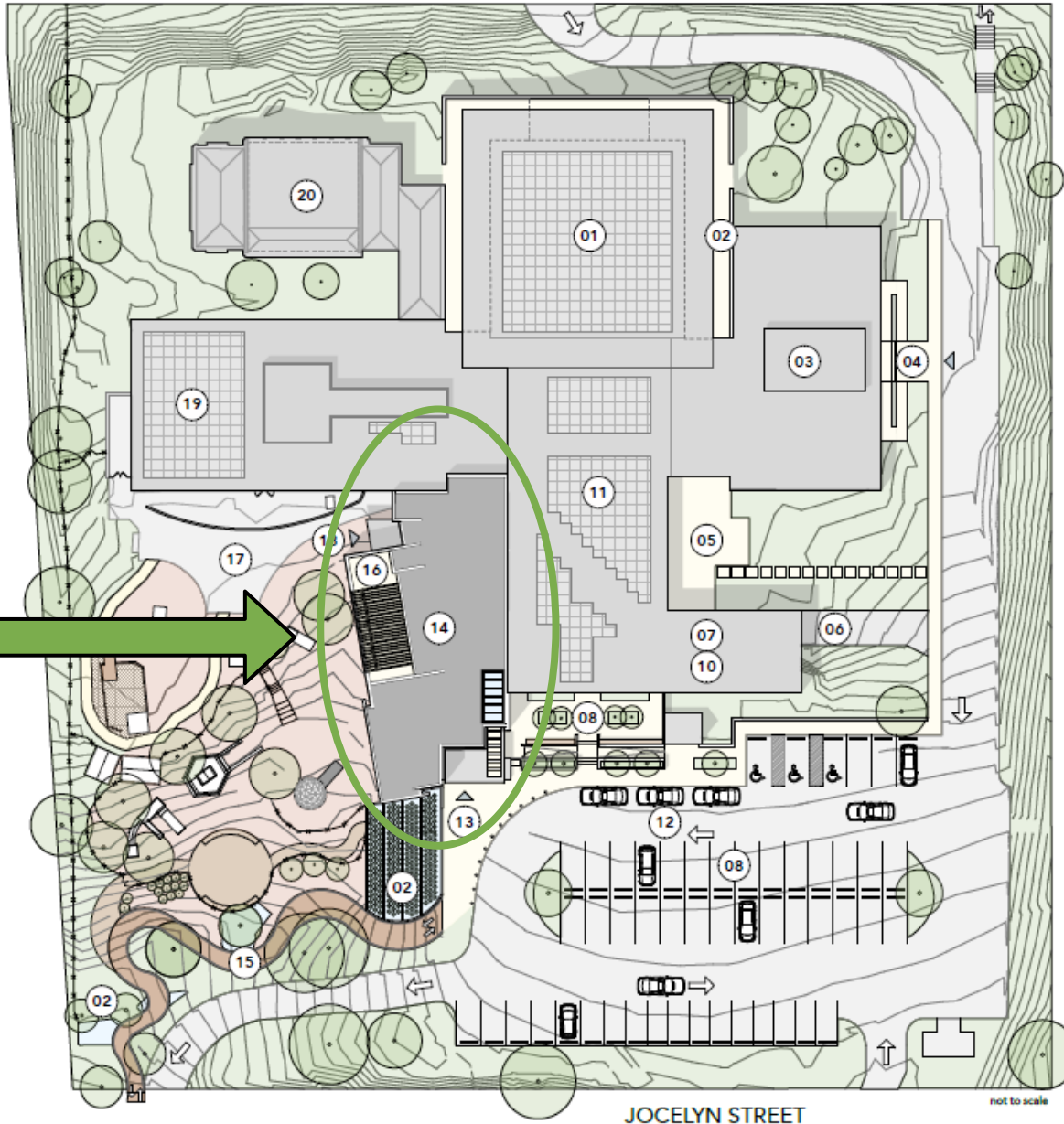
**Fall
2023**

**Projected
Project
Completion**

South Addition Construction Timeline

MILITARY ROAD

South
Addition



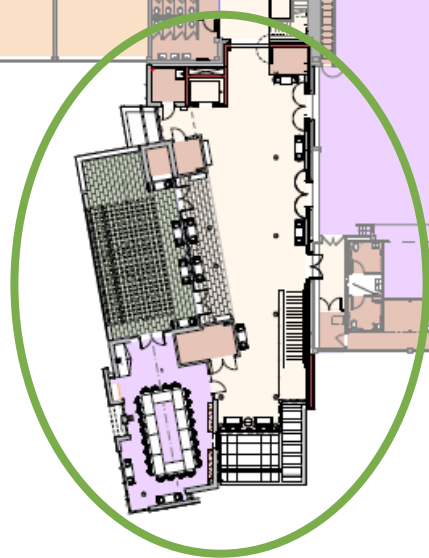
LEGEND

- 01 SANCTUARY
- 02 STORMWATER STRUCTURE
- 03 ADMINISTRATION / LIBRARY
- 04 EAST ENTRANCE (existing)
- 05 EAST TERRACE
- 06 LOADING DOCK
- 07 KITCHEN / FACILITIES (above)
- 08 PARKING
- 09 NEW SOUTH PLAZA
- 10 SCHOOL: SOUTH WING (below)
- 11 SOCIAL HALL
- 12 CAR QUEUE
- 13 NEW SOUTH ENTRANCE
- 14 NEW ADDITION
- 15 BOARDWALK PATH
- 16 WEST TERRACE
- 17 PLAY AREA
- 18 NEW WEST ENTRANCE
- 19 SCHOOL: WEST WING
- 20 BET AM

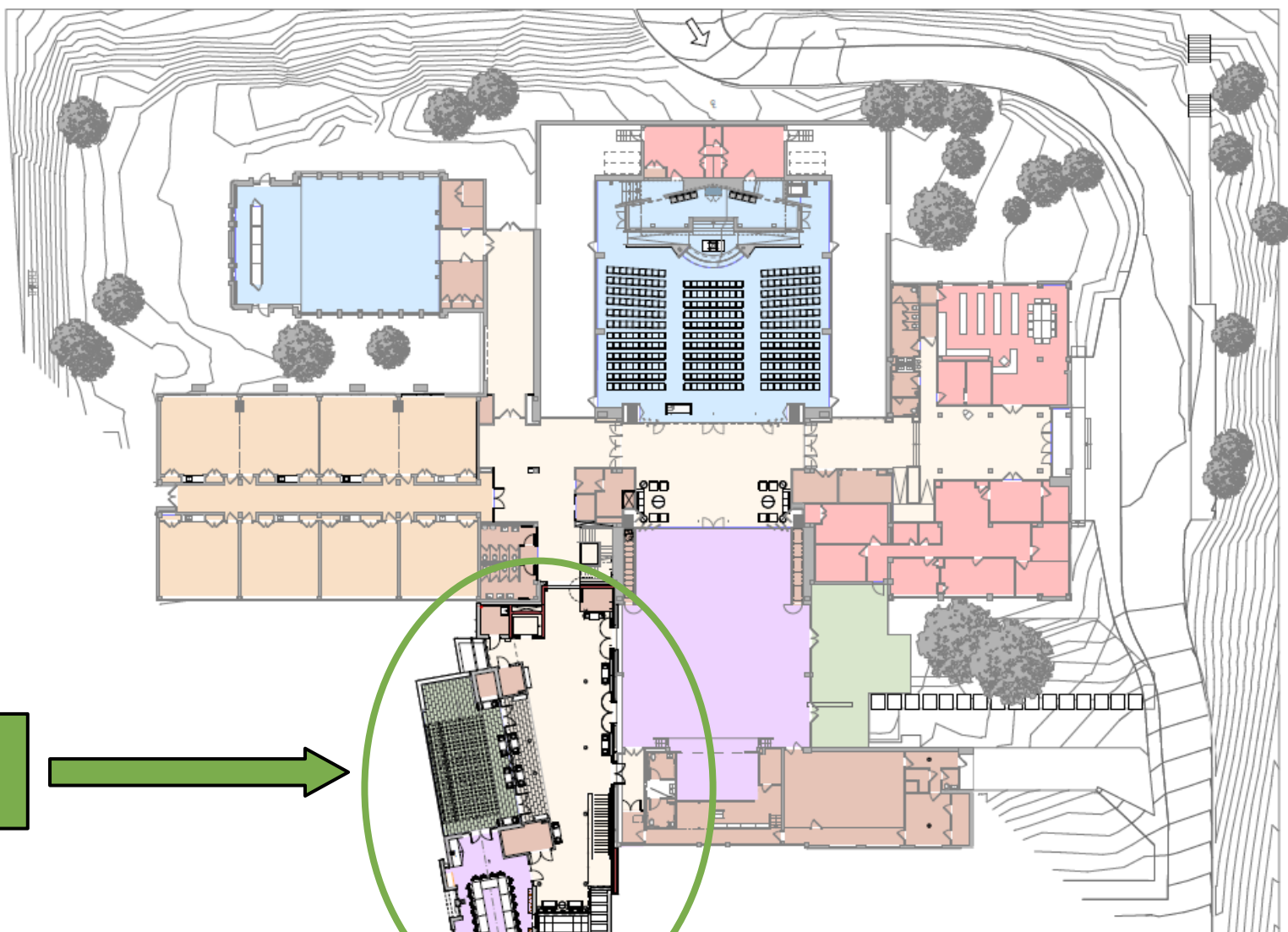
Updated South Addition



South
Addition



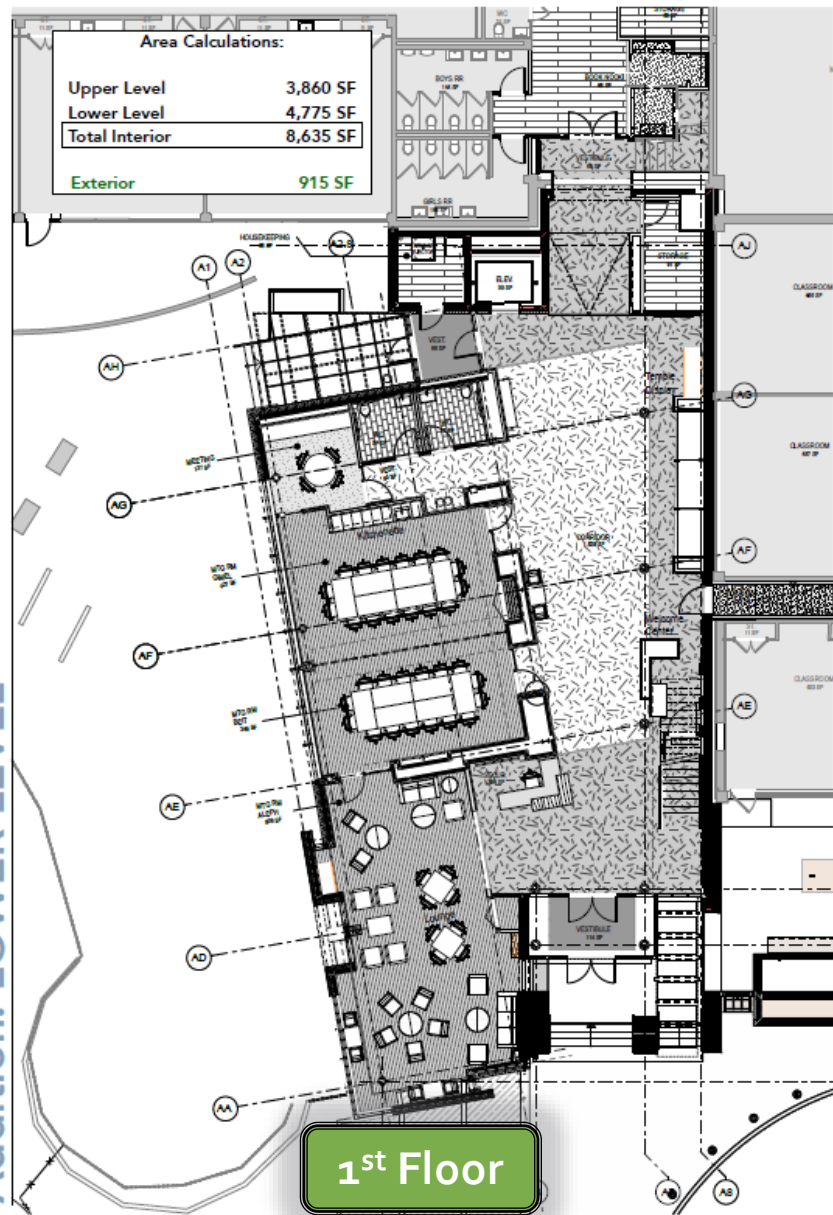
Updated South Addition



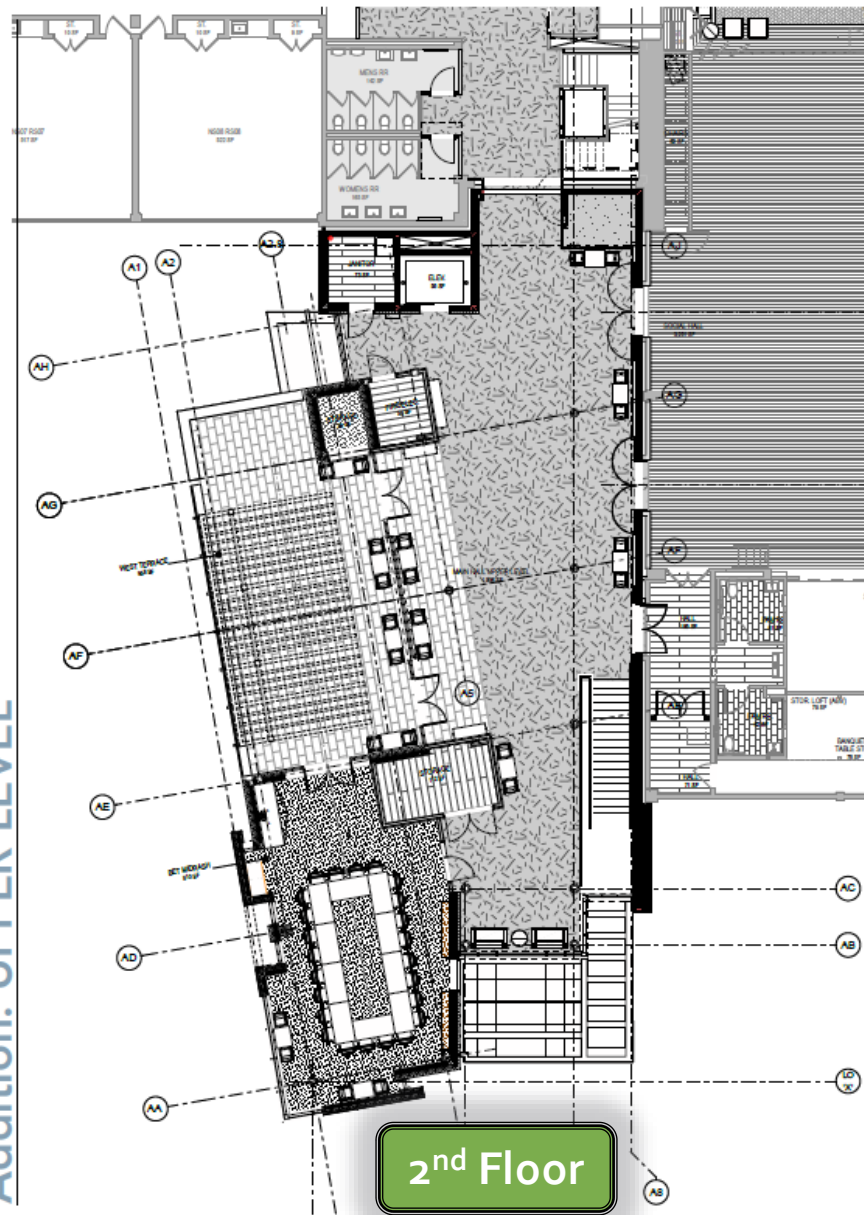
LEGEND

- Worship
- Multipurpose / Meeting
- Education
- Administration/Library
- Service / Support
- General Circulation
- Terrace

Addition: LOWER LEVEL



Addition: UPPER LEVEL



PHASE 02 PLANS

Area Calculations:

Upper Level	3,860 SF
Lower Level	4,775 SF
Total Interior	8,635 SF
Exterior	915 SF

New Small Meeting Room

Two New Flex Spaces

New Lounge/Flex Space

1st Floor

Book Nook

Secure School Wing Door

New Relocated Elevator

New Full-Access Family Restrooms

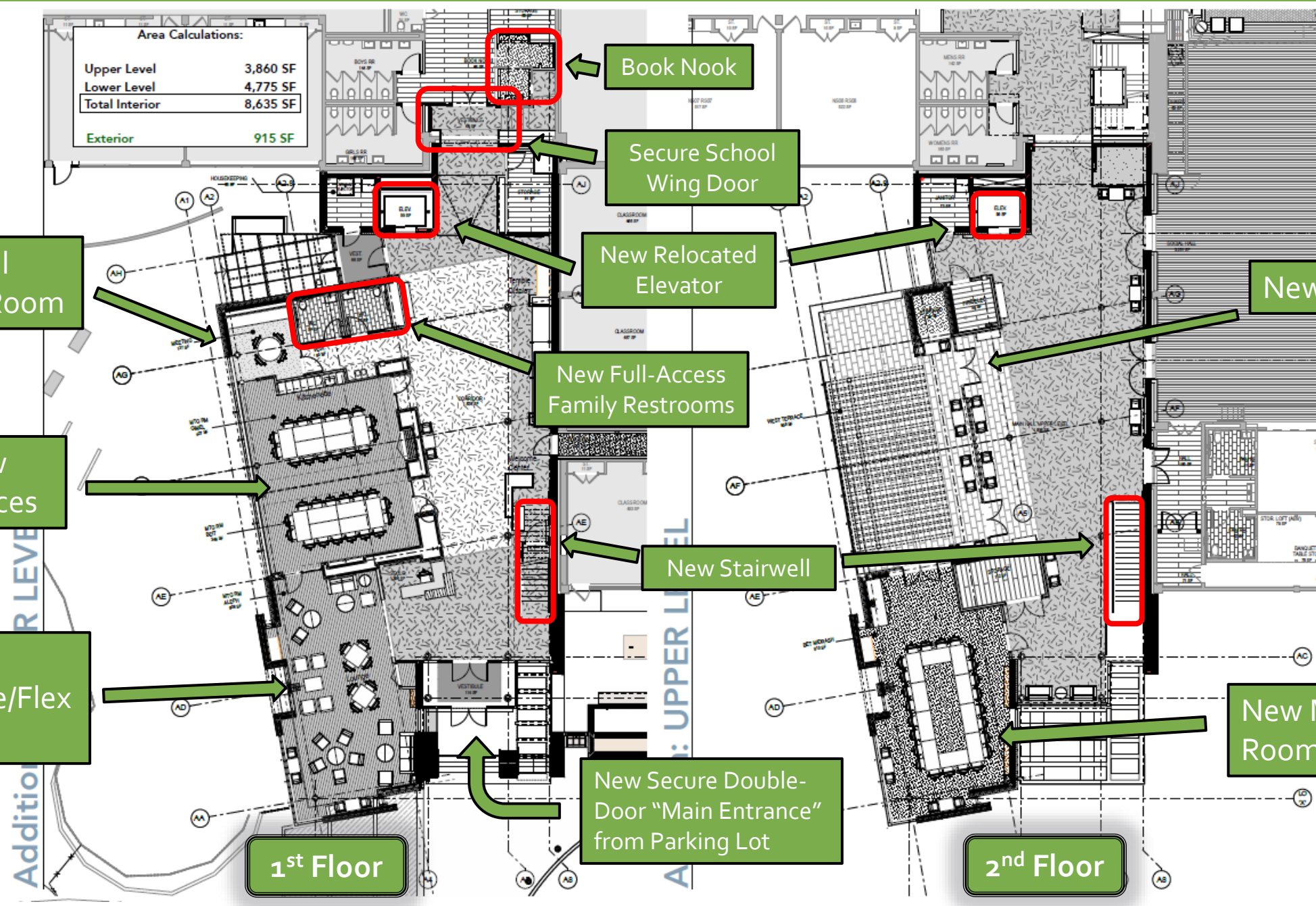
New Stairwell

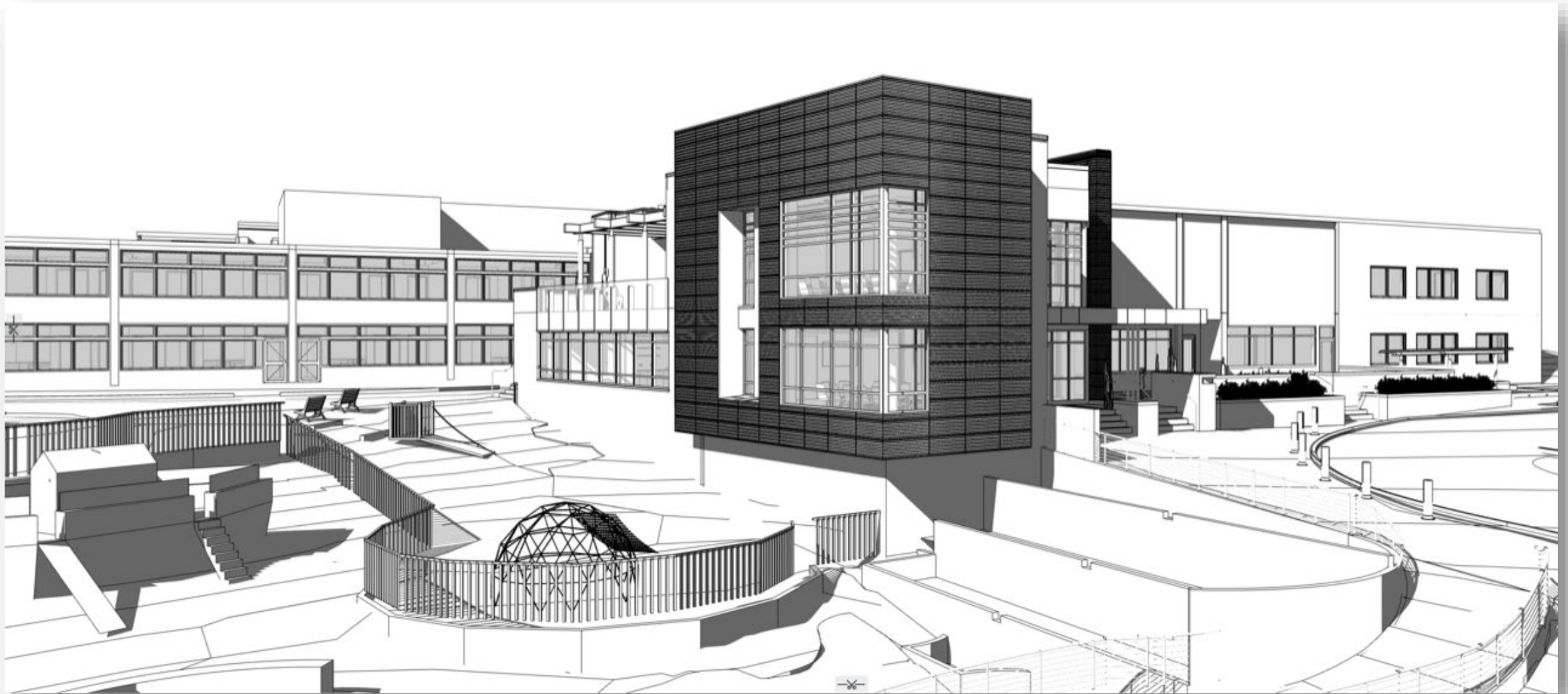
New Secure Double-Door "Main Entrance" from Parking Lot

2nd Floor

New Terrace

New Meeting Room





View of South Addition from the South-West



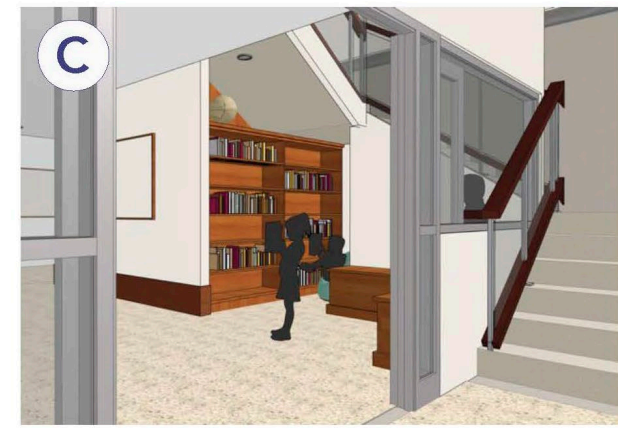
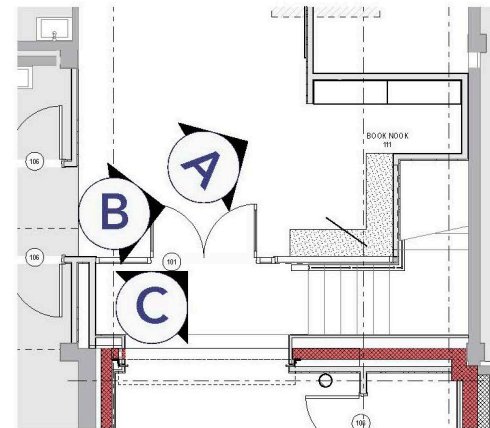
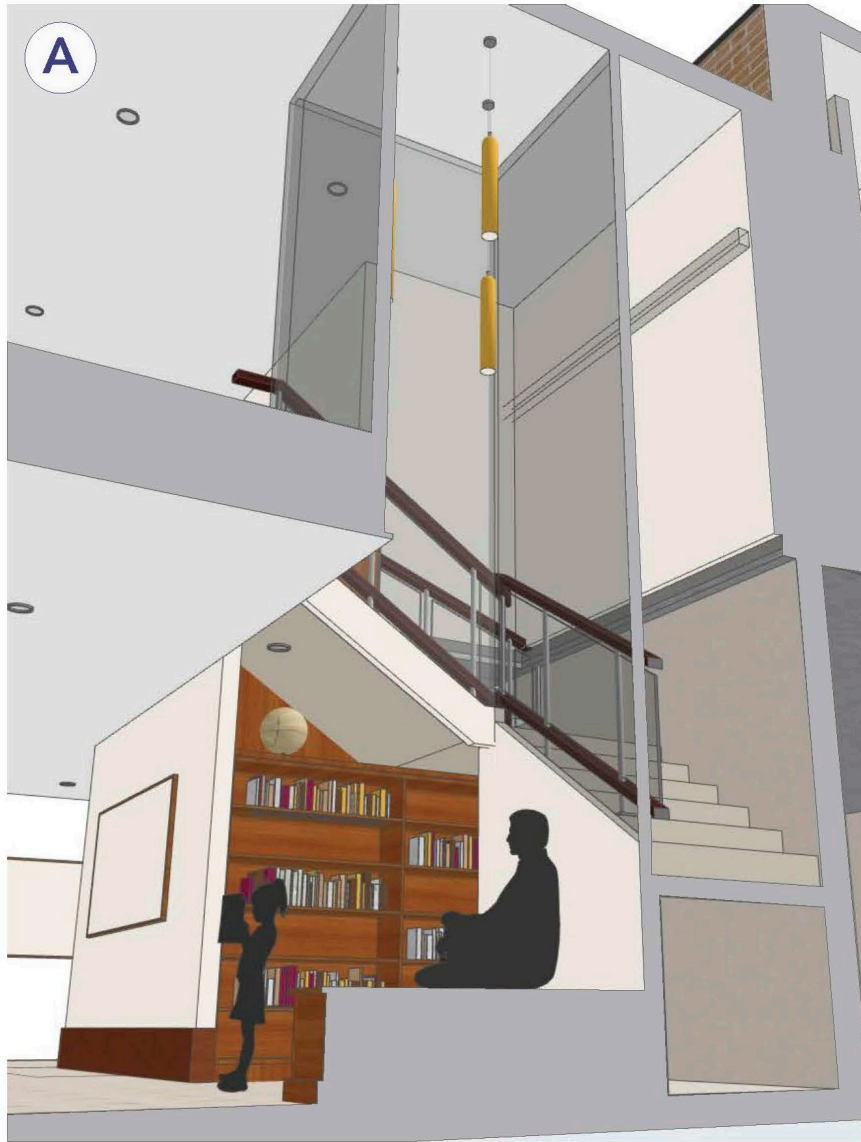
View of South Addition from the Playground



Cross-Section View of the South Addition Hallway/Lobby



Cross-Section View of the South Addition Flex Spaces & Terrace



Artistic Rendering of the South Addition Book Nook & School Wing Stairs

Exterior Designs: South Side

Jocelyn Street access

