

A large green square graphic with a subtle drop shadow. It contains the text 'HONOR OUR HERITAGE BUILD OUR FUTURE' in white, with 'HONOR' and 'BUILD' in bold. A thin, dark green wavy line is positioned near the bottom of the square.

HONOR
OUR
HERITAGE
BUILD
OUR
FUTURE

THE CAMPAIGN FOR TEMPLE SINAI

Revised Phase 2 Renovation & Expansion Plan Presentation

Campaign Re-Assessment Process

March 2020

- Goal: \$10 million
- Raised: \$9.9 million
- Ground-breaking: Summer 2020

Campaign Pause

- Strategic Planning Committee
- Congregational Survey
- Phase 1 Construction Completed

Results of Assessment

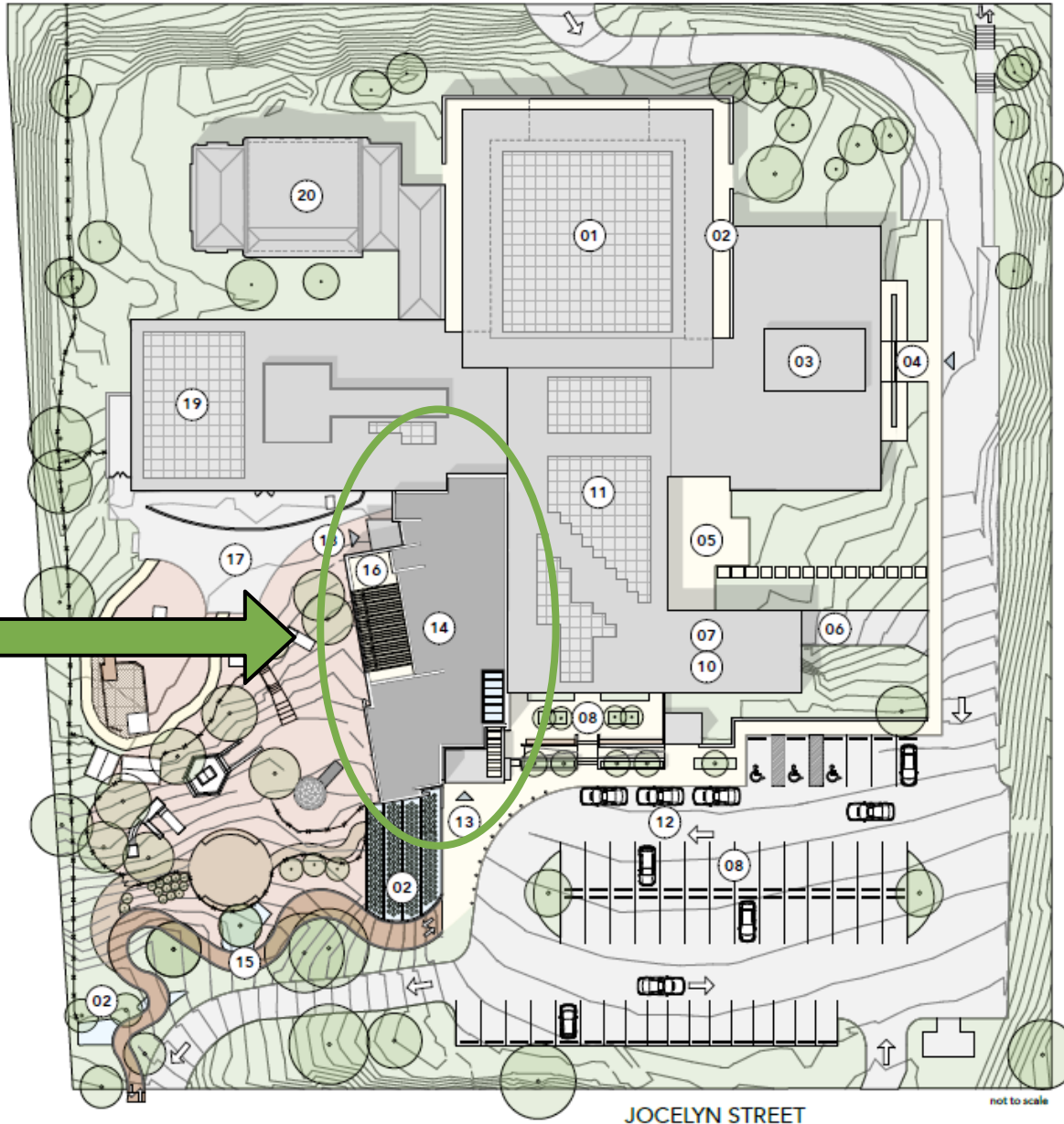
- Validated continued need for South Addition
- Flexibility for Hybrid Operations
- Security
- Outdoor Gathering
- Financial Stewardship

Renovation & Expansion Committee

- Worked with Architects on potential plan revisions
- Range of alternative plans considered
- Updated plans agreed upon

MILITARY ROAD

South
Addition



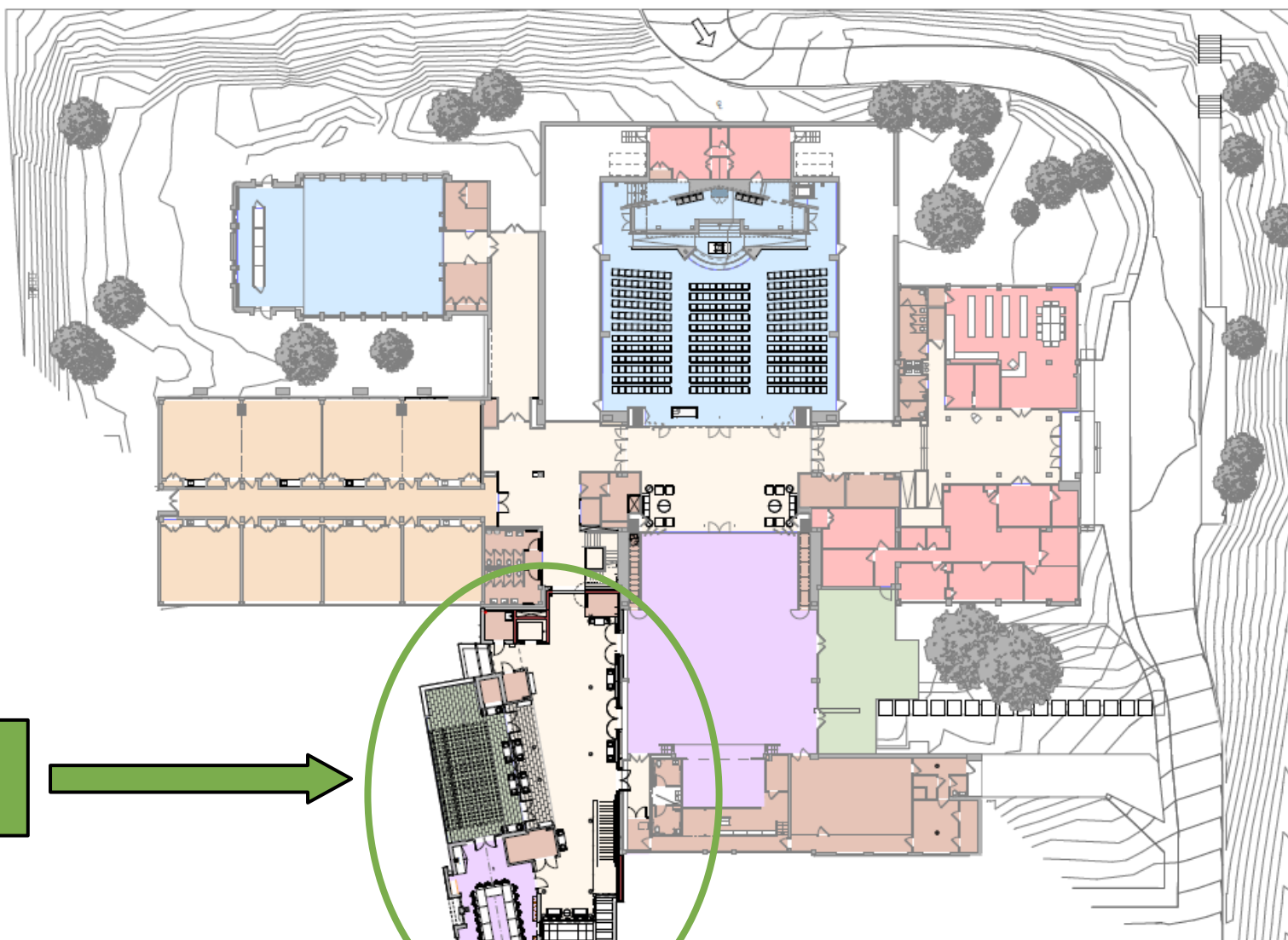
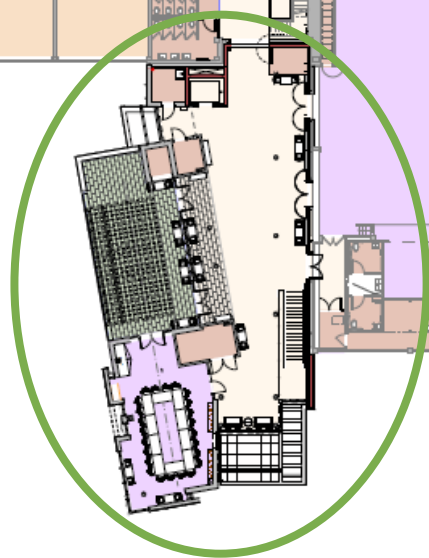
LEGEND

- 01 SANCTUARY
- 02 STORMWATER STRUCTURE
- 03 ADMINISTRATION / LIBRARY
- 04 EAST ENTRANCE (existing)
- 05 EAST TERRACE
- 06 LOADING DOCK
- 07 KITCHEN / FACILITIES (above)
- 08 PARKING
- 09 NEW SOUTH PLAZA
- 10 SCHOOL: SOUTH WING (below)
- 11 SOCIAL HALL
- 12 CAR QUEUE
- 13 NEW SOUTH ENTRANCE
- 14 NEW ADDITION
- 15 BOARDWALK PATH
- 16 WEST TERRACE
- 17 PLAY AREA
- 18 NEW WEST ENTRANCE
- 19 SCHOOL: WEST WING
- 20 BET AM

Updated South Addition



South
Addition

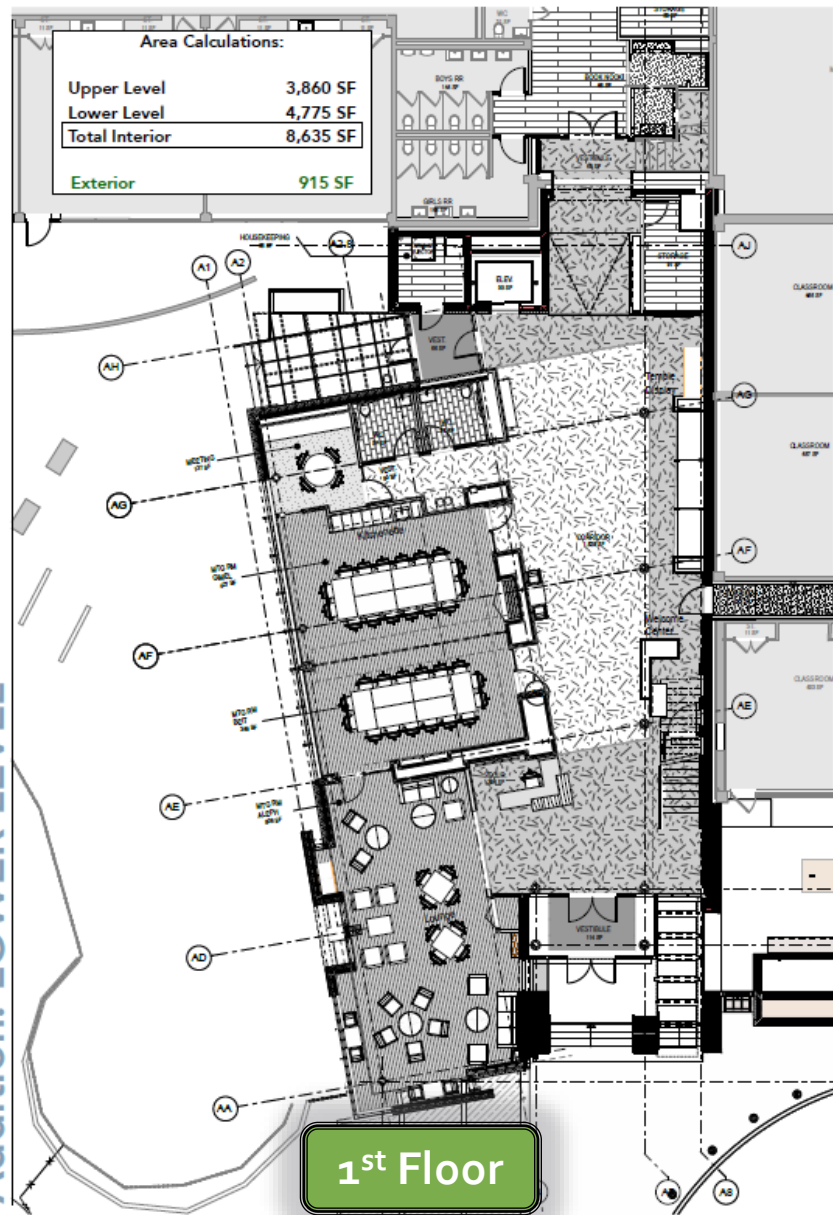


LEGEND

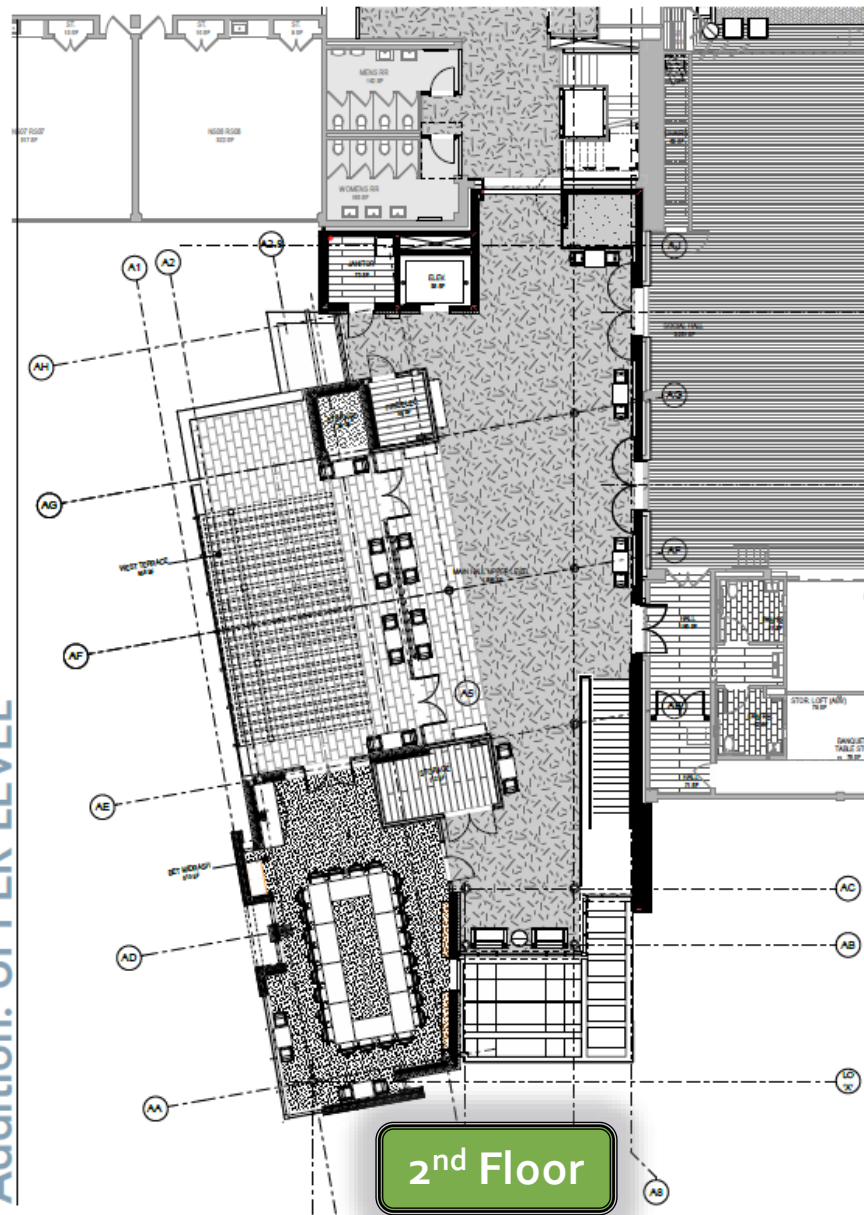
- Worship
- Multipurpose / Meeting
- Education
- Administration/Library
- Service / Support
- General Circulation
- Terrace

Updated South Addition

Addition: LOWER LEVEL



Addition: UPPER LEVEL



PHASE 02 PLANS

Area Calculations:

Upper Level	3,860 SF
Lower Level	4,775 SF
Total Interior	8,635 SF
Exterior	915 SF

New Small Meeting Room

Two New Flex Spaces

New Lounge/Flex Space

1st Floor

Book Nook

Secure School Wing Door

New Relocated Elevator

New Full-Access Family Restrooms

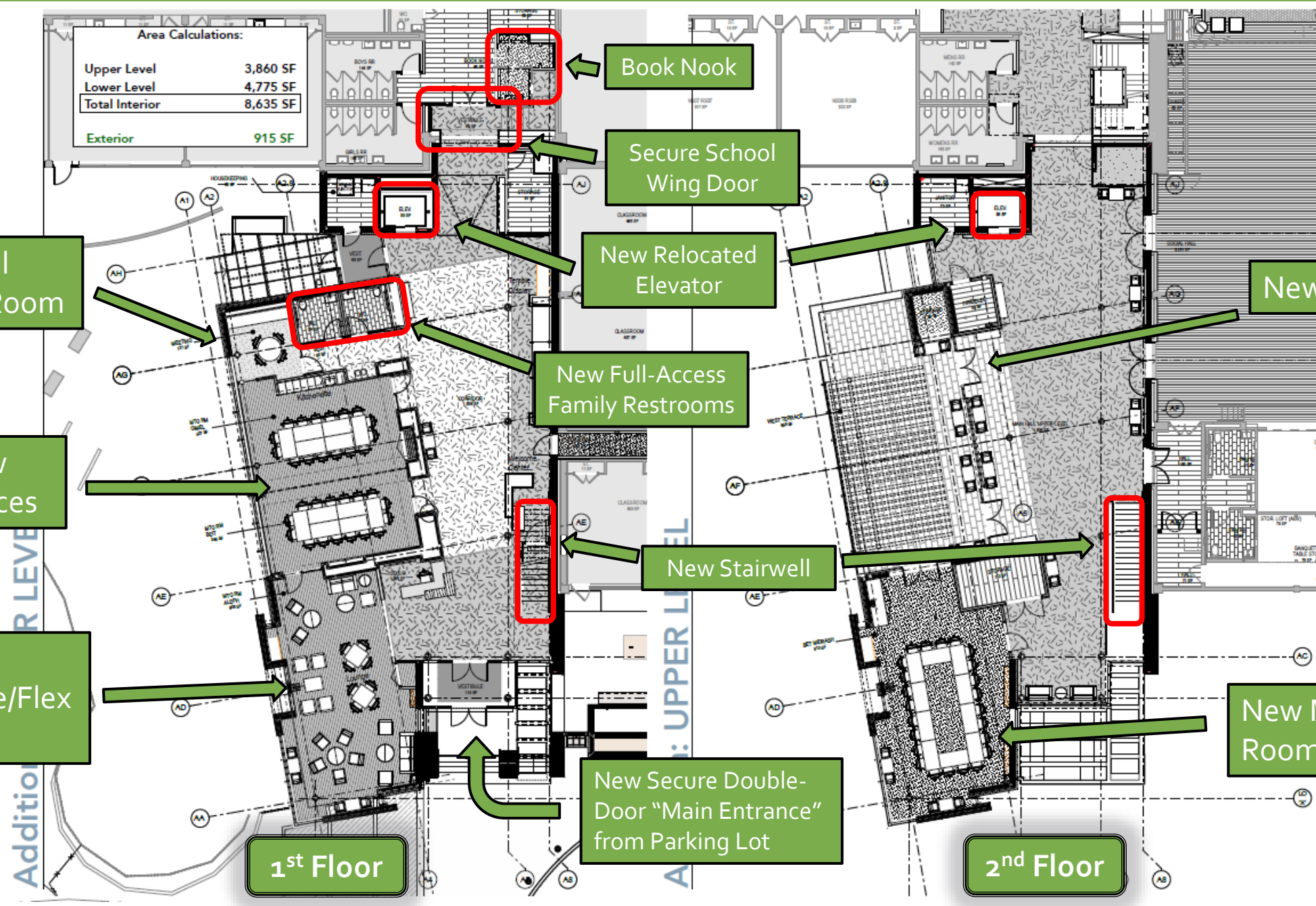
New Stairwell

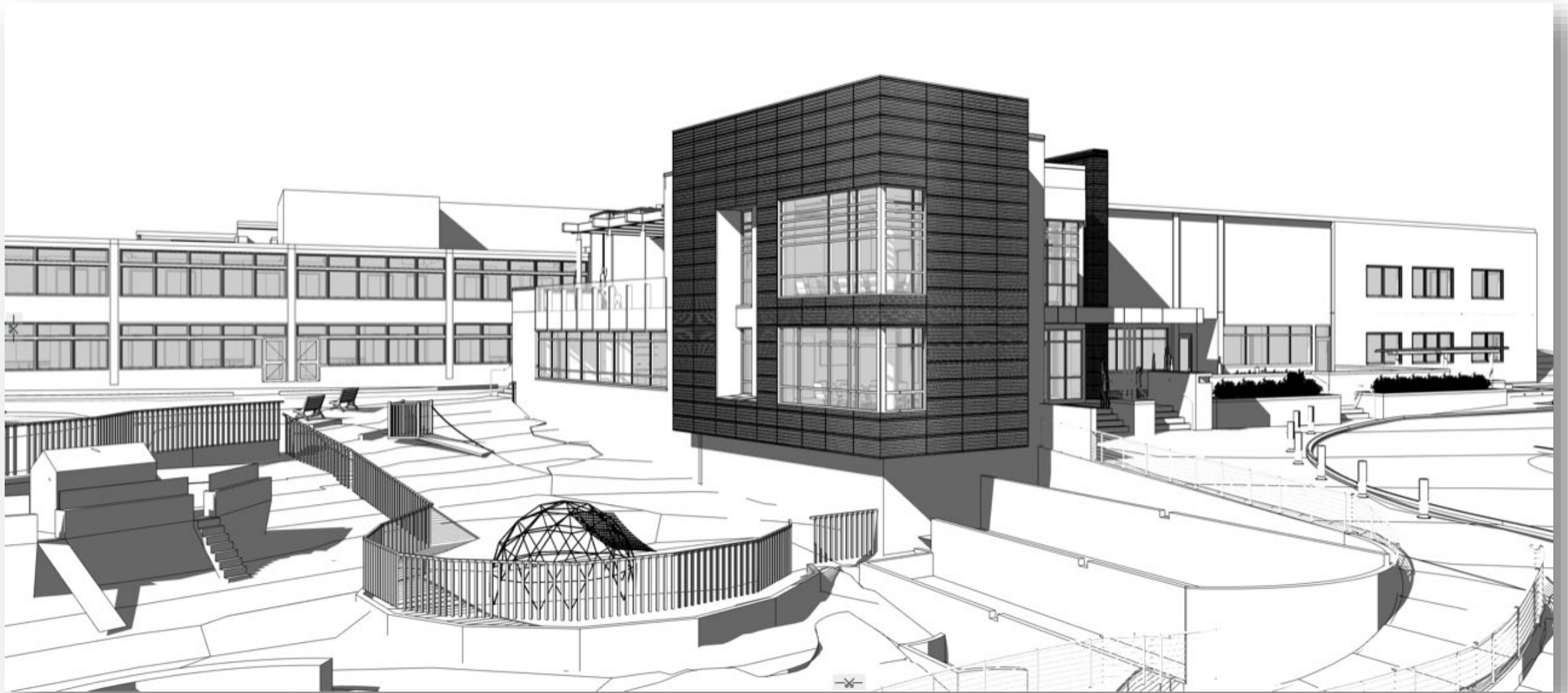
New Secure Double-Door "Main Entrance" from Parking Lot

2nd Floor

New Terrace

New Meeting Room





View of South Addition from the South-West



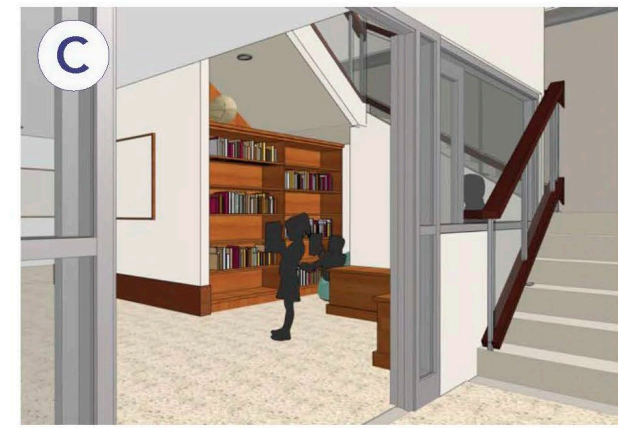
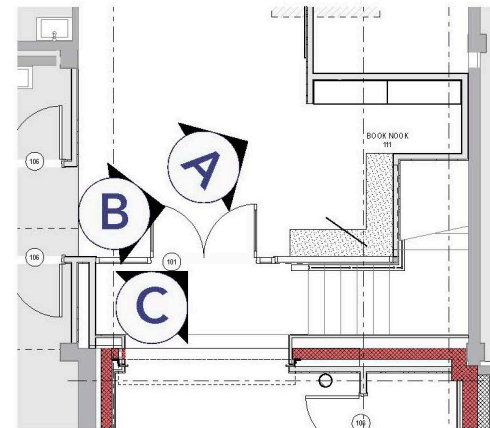
View of South Addition from the Playground



Cross-Section View of the South Addition Hallway/Lobby



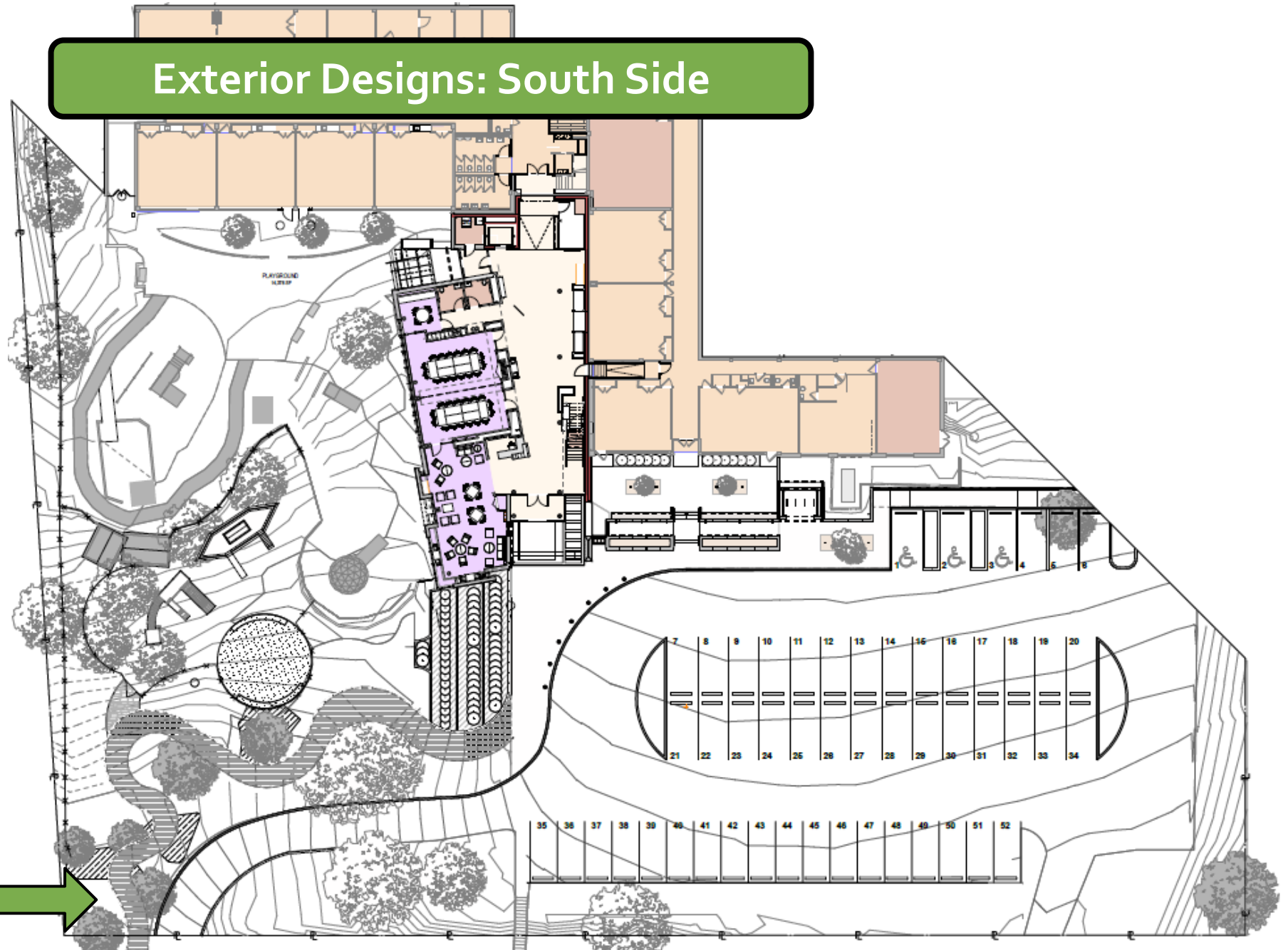
Cross-Section View of the South Addition Flex Spaces & Terrace



Artistic Rendering of the South Addition Book Nook & School Wing Stairs

Exterior Designs: South Side

Jocelyn Street access



**Spring
2022**

**Project out for
Bids**

**Summer
2022**

**Site Fencing
Break Ground
Initial
playground
reconfiguration**

**Summer 2022 -
Summer 2023**

**Addition
continues
Select exterior
site-work
Classrooms
available
Sanctuary
remains open**

**Summer
2023**

**Complete
sitework
Other interior
renovations**

**Fall
2023**

**Projected
Project
Completion**

South Addition Construction Timeline

Questions?

Naomi Camper

202.255.0360

NaomiCamper101@gmail.com

Andrew Engel

202.558.8255

AndrewEngel@verizon.net

Ken Jaffe

202.427.8831

Ken.Jaffe@gmail.com

L'DOR VADOR: YOUR ROLE IN SUPPORTING OUR FUTURE

Unlike many institutions where affiliation comes and goes, connections to Temple Sinai last a lifetime, often for generations. As we near our 70th anniversary, we must come together and build a space where our community can thrive for the next 70 years. Join us in shaping the future of Temple Sinai so that we can remain a center of Jewish life for years to come.

"IF I AM NOT FOR MYSELF, WHO WILL BE FOR ME?

IF I AM ONLY FOR MYSELF, WHAT AM I?

IF NOT NOW, WHEN?"

- HILLEL THE ELDER IN PIRKEI AVOT 1:14