

SINAI

Quarterly

Spring 2019 Adar II-Sivan 5779

In this Issue...

Contents

From the President	2
Social Action	6
Sinai Stories	8
Member News	9
Annual Meeting	10
TSWRJ	11
Calendar (April-June 2019)	14
Nursery School	18
Library	19
Adult Education	20
SinaiCares	21
Development & Contributions	21
Get Involved	26



3



4



18



7



12



FROM THE PRESIDENT

What an exciting time for Temple Sinai! It has been almost three decades since we have modernized and updated our facilities. Eight years ago, a task force led by former president Rosann Wisman took stock of Temple Sinai's history and long-range plan and reached the conclusion that our beautiful building was "falling short of accommodating our worship services, programs, meetings, social activities, and life-cycle events." The leadership group, having studied the issues, agreed that "the need for more and differently configured space, as well as cosmetic and technological improvements and modernizations, are major issues confronting the Temple." Fundraising experts and an architect were hired, giving capacity was assessed, and concept drawings were developed.

Although we had a long lag between that conclusion and the launch of a campaign, and our needs increased over time, we have arrived at the magic moment of commitment. During those years of consideration, our membership continued to grow, now at more than 1,200 households in a facility originally designed for 700 households. Demand for our educational programs continued to grow in the Nursery School, the Religious School, and adult education. Demand for programmatic and social gatherings continued to grow from committees, life-cycle events, and more. And, all that growth carried a parallel growth in the expectations and time demands of our clergy who have more than met our needs. In fact, our clergy and staff are a central reason for Temple Sinai's growth, engagement, and national reputation in the Reform Movement.

Fast forward to 2017. The Board revisited the needs of Temple Sinai and approved the re-engagement of an architect, interviewed and selected a fundraising consultant with a proven track record with synagogues and other faith-based organizations, and put together a plan to

transform aspirations to reality. Reflecting the views of many, our lay and clergy leadership have worked tirelessly to update concept drawings and seek initial funding for the project. We hope you've seen the posters in the lobby, reviewed our brochure, spoken with one of our volunteers, or visited our campaign website.

It is with gratitude, transparency and pride that we reached out to a targeted group of members to achieve two-thirds of what fundraisers suggested was the giving capacity of our members at large and, together, we have already raised more than \$6 million toward an estimated \$7-8 million project for building and grounds modernization and \$2 million for social action, pastoral care and clergy programs. Although that early "quiet phase" was difficult and laborious, thanks to the work of campaign co-chairs Naomi Camper and Andrew Engel, Rabbis Roos and Reiner along with dedicated volunteer leaders including Richard and Elaine Binder, Sue Fratkin, Matt Frumin, Nancy Golding, Ken and Debbie Jaffe, Aaron Panner, Seth Speyer, and so many others, we crossed \$6 million in February and were ready for the public phase of the campaign, which we launched February 22 with the help of still more wonderful volunteers.

Running in parallel to this effort has been the work of our Strategic Planning Committee, a cross-section of stakeholders led by Marsha Shaines, representing many groups at Temple Sinai, and we express our deepest appreciation to them for setting priorities around how to update the building and grounds concept plans and how to navigate the many directional choices for Temple Sinai.



Gary Friend
President

continued on page 4

FROM THE RABBI

BUILDING A MISHKAN

This past month, we officially “launched” our Capital Campaign. We have had the opportunity to celebrate our congregation and view the building plans, a taste of what is to come. It is a fitting time in our Torah reading cycle to launch a campaign that captures our vision for Temple Sinai’s spiritual home. At the same that we described the building plans, shared the campaign’s vision and solicited donations- we read about a parallel experience in the book of Exodus.

Throughout the book of Exodus, during the Israelites’ forty years in the wilderness, God provided Moses with the blueprint for building the Mishkan, the portable dwelling place for God. God gave Moses a carefully curated list of the finest materials needed to build the Mishkan. God described the Priests’ ornate clothing worn while performing rituals in this holy space. The Torah introduces us to the two heroes of Mishkan construction, Betzalel and Oholiab, the artisans who God endowed with divine skill to guide the project. The Israelites were asked to donate to this holy endeavor. Somehow this band of desert dwellers managed to provide all of the materials for the ornate furnishings that God requested. They gave from their hearts, and Betzalel and Oholiab turned their generous offerings into sacred space.

This is not an unfamiliar paradigm. We are a community animated by the skills, talents and imaginations of our members and staff doing holy work together.

When I think of Temple Sinai, so much of what we do here is the result of our own “Betzalels” and the “Oholiab” sharing their divine gifts. The immigration lawyers that enable us to lead on immigration issues and sanctuary. The finance and communications experts who sustain and help build our community. The Sinai House volunteers—real estate professionals, educators and job counselors who help support families

in transition. The teachers, the learners, the organizers, the committee members, the board members—each sharing their talents with this sacred community.

In the midst of the grand description of the Mishkan, the text is interrupted by the episode of the Golden Calf. The Israelites grew anxious while Moses, out of sight, remained on the mountaintop awaiting the Ten Commandments. Like the Mishkan, the people contributed their valuables to build this idol. God became angry at their blasphemy and threatened to destroy the Israelites. Moses intervened on behalf of his people, and they were spared.

What differentiates the Golden Calf from the Mishkan? The people worshipped the Golden Calf; the Mishkan is merely meant to be a vessel for God’s presence, so that God may dwell among the people. The Mishkan is ornate and grand befitting the holy presence inside, made by the loving and skilled hands of the divinely inspired artisans—but we were never meant to worship the ark or the table, or the priestly garments. The materials in the Mishkan are not what make it holy, it is the space that allows God in, it is the space that is necessary to perform the holiest rituals, it is the community’s pride in having built such an awesome and holy place.

This message sits at the heart of Temple Sinai’s Capital Campaign. A campaign meant to “honor our heritage, and to build our future.” We are building a Mishkan—sacred space, for holy work and beloved community. We are not building a Golden Calf, a structure to worship—we are building a Mishkan—a home



Rabbi Hannah Goldstein
Assoc. Rabbi

continued on page 5

HONOR OUR HERITAGE, BUILD OUR FUTURE

THE CAMPAIGN FOR TEMPLE SINAI

Our Challenge and Opportunity

For nearly seven decades Temple Sinai has housed a vibrant community of worship, learning, social action and celebration. Now that home is in need of enhancements to support the dynamism of our programming, the needs of our 1,200 member families and the challenges of our future.

Honor our Heritage, Build our Future: The Campaign for Temple Sinai is about our community coming together to make that future happen. We started quietly about eighteen months ago, and are overjoyed to report that more than **\$6.7 million** in pledges is already committed to improvements to grow and improve our building, green our surroundings and meet the needs of our current members. Our overall goal of **\$8 million** is in reach. Now we are reaching out to every member to pledge what they can toward the shared commitment of ensuring the long-term vitality of our congregation.

Improve our Facilities: \$6 million (minimum)

To meet the needs of our members for Shabbat and holiday services, life-cycle events, learning, and community-gathering.

Support our Clergy & Programs: \$2 million

To respond to congregational needs and interests in areas of social action, pastoral care, and clergy support as we develop our Annual Fund, Endowment, and other sources of annual operating revenue.

To Learn More and Give
templesinaidc.org/capital-campaign

If I am not for myself, who will be for me?
If I am only for myself, what am I?
If not now, when?
— Hillel the Elder in Pirkei Avot 1:14

continued from page 2

With concept drawings in hand, there is much more work and decision making ahead before any construction begins. The project will be led by a newly formed Renovation and Expansion Committee of nine people. They include the President; Executive Vice President/Chair, Finance Committee; Chair, Building and Grounds Modernization Committee; Chair, Strategic Planning Committee; Co-Chairs, Capital Campaign; Senior Rabbi; Executive Director; and the temple's owner-representative/project manager. That group, individually and collectively, elicits input from across the temple, evaluates options, and makes the choices that strike the best balance possible between what we would like and how much we can afford.

Our goal is to complete this work with the least disruption possible to our core activities

and programs. Our current schedule includes renovations to the sanctuary during the summer of 2020 and renovations to the social hall and the addition along the southwest area during the summer of 2021. The work on our exterior grounds will follow.

While the goal is the least disruption possible, disruption is inevitable and the 1 to 2+ year lead-time helps everyone manage. The outcome will be a facility that supports our members for generations to come and the funds to support the programs that extend our Jewish values.

As we approach April, we wish all of you a Happy Passover and continued thanks for doing what the motto of our capital campaign says: Honor our heritage, build our future.



Renderings of what the renovated and expanded Temple Sinai might look like.

Campaign Leadership

Honorary Chair

Rabbi Fred Reiner

Campaign Co-Chairs

Naomi Camper
Andrew Engel

Campaign Executive Committee

Cornerstone Division Co-Chairs

Elaine Binder
Richard Binder

Board Division Co-Chairs

Sue Fratkin
Nancy Golding
Seth Speyer

Congregation Division Co-Chairs

Matthew Frumin
Deborah Jaffe
Kenneth Jaffe
Aaron Panner

President

Gary Friend

Senior Rabbi

Jonathan Roos

Executive Director

Ellen Agler

continued from page 3

where we will worship. We are building not just for ourselves, but for our future—with learning spaces for people of all ages, with accessibility as a priority, with beautiful green spaces. We are building places for people to learn, to gather, to celebrate. It will be beautiful, because what we do here is holy, and our sacred spaces should honor God. And it will be US—it will reflect the values of Temple Sinai, the same values that in 1950 brought seven families together with a dream. They imagined the kind of community they wanted to build.

This is a project for our entire community, for people who are ready to dive in—to participate, to give what they can give, to share their divine skills and play a part in making this campaign successful. We are blessed by those who built for us, and as we continue to work toward our fundraising goal, we will keep building together. This is holy work, as we read in the book of Exodus, “Build me a sanctuary,” says God, “so that I may dwell among them.” (Exodus 25:8)

Adapted from a sermon delivered on February 22, 2019.

TIKKUN OLAM— SOCIAL ACTION @ SINAI

“You too must befriend the stranger, for you were strangers in the land of Egypt”
(Deut.10:19)

Temple Sinai's members are committed to upholding the value in this sacred text - helping newcomers in need and befriending the stranger. Much has been accomplished through the temple's Immigrant Rights, Refugee Resettlement and Sanctuary programs, now merged under the new name, Refugee, Asylum Seeker and Immigrant Support, or RAIS.

Most recently, RAIS has provided assistance to a young Congolese man, Lukitadila Blondy Mayele, who is seeking asylum. Blondy was released from ICE detention in January and is now living in an apartment near Temple Sinai while he awaits a hearing date. Blondy has settled in well since his arrival. Temple members graciously donated a laptop and iPhone, took him shopping for clothing and food, gave him a tour of DC and oriented him to public transportation, helped him register for English classes, and have invited him for meals and family celebrations. Blondy continues to be enthusiastic about his future and grateful for the support he is receiving.

Other examples of immigrant and refugee support include:

- Hosting a presentation by Merritt Groeschel, founder of Solutions in Hometown Connections, which provides in-home tutoring in basic English and child friendly English language learning at local libraries in PG County and at the non-profit's newly acquired facility. Merritt was the chair at Chevy Chase Presbyterian of the very first co-sponsorship with Lutheran Social Services and has been the godmother to the many faith organizations in the DMV who have followed its lead, including Temple Sinai. Visit www.shconnections.org for more information and to get involved. Stay tuned for more education and outreach programs in the coming months;



- Sponsoring an Afghan family for 15 months and providing continued assistance to other refugees;
- Ensuring that Temple Sinai can provide sanctuary for individuals or families facing deportation, and working with other faith-based communities via our membership in the DMV Sanctuary Congregational Network (sanctuarydmv.org/congregation-network);
- Assisting Cedar Lane Unitarian Church in Bethesda in extending protection to an immigrant in danger of deportation. So far, about fifteen Temple Sinai members have signed up to provide companionship or tutoring, run errands, and offer legal help. Please contact Debby Litt (debolitt@icloud.com), Temple Sinai's liaison to Cedar Lane, for information about upcoming orientation and training dates;
- Visiting with immigrant families in McAllen, TX and detainees at the Steward Detention Center in Lumpkin, GA;
- Providing legal advice to immigrants locally and around the country. Three Sinai member lawyers volunteered for a week each at ICE detention centers on the Texas-Mexico border working directly with immigrant clients. One Sinai member, Cam Crockett, helped change the law in Maryland so undocumented immigrant parents have an easy and legally binding mechanism to plan for child custody for their citizen children in case the parent is detained or deported. Are you a lawyer? We need your help.

Our accomplishments are many, but there are so many tasks, known and unforeseen, that lie ahead. It is time to refresh and enhance our volunteer lists with additional volunteers to ensure that Temple Sinai can meet unexpected demands for action. The need for attorneys to accompany detainees to court appearances on short notice is a prime example. Investment of time for volunteers ranges from “one-offs” to longer term commitments; any contribution of time and effort is valued.

If you have been thinking of getting involved, now is the time! Contact us for more information, designating areas of interest, if appropriate. **Thank you!**

Andrea Dettelbach (asdettelbach@gmail.com)
Glenn Engelmann (glenn.engelmann@gmail.com)
Elizabeth Hoffman (eahhome@yahoo.com)
Catherine Ribnick (ca.ribnick@gmail.com)

Co-Chairs, RAIS

Fifth Annual Tricia Davis 5K Walk/Run for Sinai House

**Mother's Day, Sunday, May 12, 2019 at 8 AM
Rock Creek Park, Carter Barron Parking Lot,
Washington, DC (Same great location where
the first 3 races were held, remember the hill
challenges!)**

Your participation inspires our residents and supports Sinai House in its mission to enable families to move from homelessness to independence by providing safe and affordable housing, comprehensive social services and financial support.

Visit SinaiHouseDC5K.com or email us at development@templesinai.org

- Register as a runner or walker
- Join a team (The Temple Sinai Religious School class with the most registrants will have a pizza party!)
- Start your own Personal Fundraising Page (This is an easy way to raise money by inviting your friends and family to support your run, and a great B'nei Mitzvah project!)
- Become a Sponsor (Your company name or logo can be on the Race T-shirt and in the Virtual Race-Day booklet sent to all registrants for contributions of \$500 or more by April 18.)



Cantor Laura Croen and Sinai House President Amy Schear with Sinai House residents at the 2018 Tricia Davis 5K Walk/Run for Sinai House.



L to R: Howard Oppenheim, Elena (SOME staff), Joe Godles, Gail Rebhan, Lester Scall, Terri Salus, and Wendy Kahn.

Volunteer with Temple Sinai Members to Serve Breakfast at So Others Might Eat (SOME)

4th Sunday of each month, 6:45 AM-9:15 AM

Are you looking for a regular volunteer opportunity? We are looking for two people to complete our group of monthly volunteers at SOME. This year, we are scheduled to volunteer at SOME on April 28, May 26, June 23, July 28, August 25, September 22, October 27, November 24, and December 22, 2019. Students (13 years old or older) may receive service learning/ community service credit.

Fifty years ago, in 1969, So Others Might Eat (SOME) started feeding the hungry of the Nation's Capital with leftover sandwiches from a lunch truck. Today, in addition to feeding the hungry, SOME provides dental, medical, psychiatric, substance abuse, and residential services. But the centerpiece of SOME continues to be its dining room at 71 O Street, NW. Since 2006, a regular group of Temple Sinai members has been serving breakfast on the 4th Sunday of every month. As we head down North Capitol Street to SOME at 6:30 AM and see the beautiful U.S. Capitol dome a few blocks away, we are saddened that in the shadow of the Capitol, there is need for us to feed 400 hungry souls. But, after serving a freshly-made breakfast (cooked by another long-serving volunteer group) of scrambled eggs, grits, bacon, bread, fruit or juice, and coffee, we leave, shortly after 9 AM, with great satisfaction, knowing that we have helped SOME fulfill its mission, "Restoring Hope & Dignity, One Person at a Time."

For information about joining the Temple Sinai SOME breakfast bunch, contact Terri Salus at TerriSalus@gmail.com or (301) 587-5017.

If you have questions about SOME, other volunteering opportunities at SOME, or the SOME Volunteer Hub, contact SOME's Volunteer Coordinator, Tyler Benjamin, at Volunteer@Some.org, TBenjamin@Some.org or (202) 797-8806x2201.

SINAI STORIES

Story telling is a part of our Jewish tradition—it connects us with each other and our shared history, and binds us together for the future. Sinai Stories is a series about our own connections to one another, Temple Sinai, and the larger Jewish community.

If you are interested in sharing your story, please email coordinator Marcie Solomon at marcie.solomon@gmail.com.

“COMFORT THE AFFLICTED AND AFFLICT THE COMFORTABLE:” AN ACTIVIST’S JOURNEY

Steve Klitzman, Chair, Temple Sinai Gun Violence Prevention Group

I’ve always been an idealistic but organized activist. I began in my college years in the 1960s as a civil rights supporter and opponent of the Vietnam War, especially while serving as Editor-in-Chief of the University of Pennsylvania’s *Daily Pennsylvanian* (“DP”) newspaper. In our first DP editorial, we adopted an old Kansas newspaper editor’s motto that our job was to “comfort the afflicted and afflict the comfortable.” So we reported civil rights and anti-war protests on campus and in Philadelphia, sent a reporter in March 1965 to cover the famous march from Selma to Montgomery, Ala. across the Edmund Pettus Bridge, and in Jan. 1966 editorialized against escalation of the Vietnam War by President Johnson and called on the UN to intervene in Vietnam.

Later, I served as a Peace Corps Volunteer teacher in the Fiji Islands; as leader of DC’s “Group 83,” an Amnesty International “Prisoner of Conscience Adoption Group;” and then served as chair of the Committees on International Human Rights of the American and Federal Bar Associations.

But from February 1988 on I was primarily focused on my work as an attorney at the Federal Communications Commission (FCC) and on supporting my growing family. My main extracurricular work at the time was as an adjunct professor of media law and later First Amendment law at the Institute for Communications Law Studies at the Columbus School of Law, Catholic University of America, where I taught between 1985-2013.

As luck would have it, it was just a few days after I retired from the FCC in February 2016, that Barbara Kraft, then chair of the Temple’s Social Action Committee, called me. It was a call that reactivated me to fight for gun violence prevention (GVP), a great departure and far more satisfying activity than the typical political and economic battles at the FCC. In the process it also helped me to re-engage with Temple Sinai and with its many wonderful and talented clergy and congregants.

My family and I had been members since 1994 when our younger son Jeremy started in the Temple Sinai Nursery School. He and his older brother Zachary both went on to become B’nei Mitzvah and then confirmands at the temple. But except for my brief service on the TS Library and Social Action Committees and my wife Justine’s service as co-president of the Sisterhood in 2009-2010, I did not feel very connected with the temple and actually debated leaving the congregation.

Barbara’s call was to invite me to a demonstration at the Realco Gun Store in District Heights, MD. This store had been identified by the organizers of the protest as the seller of nearly a third of the guns recovered from DC crime scenes.

Following that first GVP encounter, Barbara encouraged me to form the GVP Working Group. The group now has over 75 members. Join us. It has been a truly satisfying endeavor for me and engaged me as never before in the life of the temple. For a listing of GVP activities please see the temple website or contact me directly at steve.klitzman@gmail.com.



Steve Klitzman with Temple Sinai’s installation of “Memorial to the Lost” in memory of over 200 gun violence victims in DC area.

MEMBER NEWS

Mazel Tov to...

.....Evan & Rachel Croen on the birth of their daughter, Adira June Croen; Adult Hebrew teacher Rabbi Jake Singer-Beilin on his engagement to Rabbi Rachel Ackerman; David Stoopler & Natalie Orpett on the birth of their son, Asher Howard Stoopler; Courtney Weiner & Jason King on the birth of their daughter, Dahvi Rose King; Deborah Kalb (David Levitt) on the publication of her children's book *The President and Me: John Adams and the Magic Bobblehead*; Ronald & Libby Merrill on the marriage of their son Barry; Daniel & Jacquelyn Serwer on the engagement of their son Adam; Anna Sommer Schneider & Stephen Schneider on the birth of their daughter, Sophia Schneider; Celia and Julian Josepshs on the birth of their grandson Lucas Ziskroit, son of Serena Josepshs Ziskroit and Harris Ziskroit; TSRS Teacher & Program Administrator Liza Fishman on her engagement to Adam Pugh; Jordan Friend and his 4615 Theatre cast for the positive Washington Post review of "Separate Rooms"; Jill Stepak on winning a Kohelet Prize for her work as an educator at the Milton Gottesman Jewish Day School; Matthew Edwards and Shoshana Marvin on the birth of their daughter Golda; Anne and Robert Molofsky on the birth of their grandchild.

We Mourn the Deaths of...

...Pauline Stein and Phyllis Greenbaum.

We Extend Condolences to...

...Richard Jerome (Liz Rose) on the death of his brother Jonathan Jerome; Alisa Lebowitz (Michael) on the death of her father, Howard Cohen; Haya Hakim (Jeffrey) on the death of her father,

Marvin Berman; Marian Liebman on the death of her brother, Arthur Beyer; Laura Summer (Jack) on the death of her father, Harold Levitt; Leora Hochstein (Szami Miksche) on the death of her father, Robert Aaron Hochstein; Andra Chernack (Greg) on the death of her father, Normand Roy; Eliot Greenwald (Anita) on the death of his mother, Joyce Greenwald; Gilbert Geldon (Marjorie) on the death of his father, Earl Geldon, grandfather of Dan Geldon (Heather); Marsha

Shaines (Robert Loesche) on the death of her father, Stuart Shaines, grandfather of Samuel and Emily Loesche; Eve Schenker (Nathaniel) on the death of her father, Leon Levine; Adult Hebrew teacher Rabbi Jake Singer-Beilin on the death of his grandfather Herold 'Mesh' Singer; Jeff Kaye (Scott Mezistrano) on the death of his father, Myles Kaye; Ann Sloane on the death of her mother, Harriet Sloane; Nat Cohen (Lynn Parseghian) on the death of his father, Joseph P. Cohen; Bonnie Levin (Jon Haber) on the death of her sister-in-law Ilene Levin; Ellen Ostrow (Ronald Kimball) on the death of her father, Harold Ostrow.

Welcome to Our New Members

Courtney & Megan Eimerman-Wallace and their son, Gianni

Djinni & Mark Field and their children Miles & Sylvie

Claire Starr

Leslie & Kenneth Wollack



Mazel tov, Kelly Whitehead!

We are excited to share the news that beginning this June, Kelly Whitehead, our Youth Engagement Specialist, will begin rabbinical school at the Hebrew Union College – Jewish Institute of Religion. We are excited to see Kelly take this next step in her work as a Jewish professional leader, and embark on five years of learning, studying, growing, and achieving her dreams of the rabbinate.

Kelly began working at Temple Sinai in the spring of 2015, as she returned from a semester abroad in Haifa, while she was a student at American University. We met Kelly at URJ Camp Harlam, and were excited to bring her onto our team. Students loved Kelly's sense of humor and sense of joy in the classroom. Paired with her careful thinking about how best to meet the needs of all her students, Kelly was a great fit for Temple Sinai Religious School, and we were thrilled to get to know her better. Kelly stayed on board supporting our Chug Ivrit program.

Kelly graduated from American University in December 2015, and began working at Temple Sinai in January 2016 full-time as our Youth Engagement Specialist in partnership with URJ Camp Harlam. From September – May, we have benefitted from Kelly's ease of connection with tweens and teens, her cultivation of a sense of fun in our Noar program and with our Sinaites, and her humor and enthusiasm in the Youth Education offices. In June – August, Kelly brought her leadership skills and love of Jewish learning to Camp Harlam, where she worked as a unit head for both younger and older campers, leading the Gesher (counselor-in-training) program in the summers of 2017 and 2018. Throughout the year, Kelly has been a support to families choosing a Jewish summer camp – from bringing in our partner camps to visit, to sharing her own experiences as a camper and staff member to help make the decision to spend a summer at camp more accessible. She has brought the summer time skills of full-time fun and flexibility into the rest of the year, and we are so grateful.

Please join us on **Friday May 3 at 8 PM** in joy and gratitude as we celebrate Kelly's work at Temple Sinai, say farewell, and bless her on this next stage of her journey!

ANNUAL MEETING

Pursuant to Article V, Section 6 of the By-Laws of Temple Sinai, the Nominating Committee hereby submits the following nominees to fill the positions indicated:

Officers

President – Deborah Lewis
 Executive Vice President – Marcie Solomon
 Vice President – Jill Chenok
 Vice President – John Hellerman
 Vice President – Anita Stoll
 Treasurer – Nancy Golding
 Assistant Treasurer – Naomi Camper
 Secretary – Seth Speyer
 Assistant Secretary – Laura Steel

Board of Trustees

Ken Jaffe Liz Rose
 Matt Pachman Steve Sacks
 Dietra Reiser

2020 Nominating Committee

Presented by the 2019 Nominating Committee:

Gary Friend (past president)
 Steve Chertkof (returning member)
 Steve Metalitz
 Alexandra Vitaletti
 Meredith Wade (returning member)
 Evan Wechsler (returning member)
 Gail Wides

Presented by the Board of Trustees:

Laura Steel
 Anita Stoll

2019 Nominating Committee

Andrew Engel (past president)
 Steve Chertkof
 Cathy Klion
 Matt Pachman
 Adam Prill
 Linda Rosen
 Jean Veta
 Meredith Wade
 Evan Wechsler

Submitted by
 Andrew Engel
 Chair, 2019 Nominating Committee

Temple Sinai Bylaws; Article IX - Nominations

Section 1. The Nominating Committee shall consist of nine members including the chairperson, who shall be the most immediate past president of the Congregation and who is still a member of the Congregation. The immediate past president shall serve as chairperson for one two-year term. If the immediate past president is not able or willing to serve, the Board shall appoint another chairperson. Six members of the Nominating Committee shall be members of the Congregation, who are not Board members and shall be nominated by the previous year's Nominating Committee. The remaining two members of the Nominating Committee shall be Board members and shall be nominated by the Board. Other than the immediate past president, members shall be nominated to serve a one-year term and approved by the Congregation at the Annual Meeting. No member of the Nominating Committee is eligible to serve more than two consecutive terms. Terms shall be staggered to ensure that approximately half of the members are returning each year.

Section 2. No member of the Nominating Committee shall be eligible for nomination as an officer or Board member.

Section 3. An elected member of the Nominating Committee who is unable or unwilling to serve or is no longer a member of the Congregation in good standing may be replaced by the Board.

Section 4. The Nominating Committee shall submit to the Board not less than 35 days prior to the Annual Meeting at least one nominee for each office and each vacancy on the Board and the names of six nominees for the succeeding year's Nominating Committee. The nominees so designated shall not be subject to revision by the Board. The report of the Nominating Committee, a copy of this article of these Bylaws, and the Board's selection of its candidates for the Nominating Committee for the succeeding year shall be distributed to the membership of the Congregation, in accordance with Article II, Section 4, not later than 30 days prior to the Annual Meeting of the Congregation. Additional nominations for officers, the Board, and members of the Nominating Committee may be submitted by written communications signed by at least 20 members to the President at least 15 days prior to the Annual Meeting. All nominations shall be listed alphabetically for each position in the notice of the Annual Meeting to the membership of the Congregation. No further nominations for officer or member of the Board shall be considered at the Annual Meeting.

Annual Meeting

Wednesday, May 22 at 7:30 PM

Refreshments will be served beginning at 7 PM and the meeting will begin at 7:30 PM.

This year's meeting will again feature the Annual Meeting raffle! Be sure to join us for a chance to win one of the following:

- Reserved parking in our lot for one High Holiday service
- Complimentary dinner for a couple or family at any festival service or special dinner
- 2 free tickets to a theater night out event
- Cameo role in the Adult Purim Spiel
- And more!

We will also vote for the slate of temple leadership, a bylaws update, and learn about highlights of this year's accomplishments and plans for Temple Sinai. Watch for an email with links to Annual Meeting materials posted to the temple website in early May. If you would like print copies mailed to you, please call the temple office.

Annual Meeting materials and further information will be posted as it becomes available at templesinaidc.org/annual-meeting

Staff contracts are available for review by appointment with Executive Director Ellen Agler. Please email her at eagler@templesinaidc.org to schedule an appointment.

Upcoming 2019 Programs

Sign up or register for events: templesinai.org/gather/tswrj
Questions? Email: templesinaiwrj@gmail.com

SATURDAY, APRIL 20 — 6:00 to 9:00 PM

Second Seder at Temple Sinai

Join us for the Second Seder at Temple Sinai, Saturday, April 20, 2019, 6 pm to 9 pm, co-ordinated by Temple Sinai Women of Reform Judaism. Rabbi Adam Rosenwasser and Cantor Laura Croen will lead us through the reading of the Passover story and singing of holiday songs. A full holiday meal will be served. Members and nonmembers are welcome. **Deadline for online registration: 12:30 pm, Tuesday, April 16th.**

We use the Baskin Haggadah. Bring your own or purchase yours now, to be picked up at the Second Seder.

Questions? Contact Celia Josephs
(celia.josephs@gmail.com or
Temple Sinai (202) 363 6394)

MOST WEDNESDAYS — 7:30 to 9:30 PM

SCHEDULED MONDAYS — 2:00 to 4:00 PM

Mah Jongg

Check the schedule on Temple Sinai's website. Novices and mavens welcome! E-mail: greenwald.anita@gmail.com (Wednesday) and susanschiffer@hotmail.com (Monday)

Save the Date

JANUARY 3-5, 2020

TSWRJ 4th Biennial Retreat
Westin, Annapolis

TSWRJ Board Meetings 2019

All TSWRJ members welcome.

Sunday, April 14 - 9:30 am

Sunday, June 2 - 6pm (off site)

THURSDAY, MAY 16 — 7:30 TO 9:30 PM

TSWRJ Annual Meeting —

Tapas and Talk

Enjoy small bites and libations as we celebrate our year and have meaningful conversations that will influence the future of TSWRJ. The evening's agenda will include approving our budget, and electing and installing our board. As the date approaches, watch our website for updates with registration details.

Questions? Contact Ilana Gordon
(ilana@wordwizardsinc.com) or
Lisa Tucker (lisatucker@yahoo.com)

TSWRJ Judaica Shop

Come to shop, stay for the company!
Hours during religious school.

Sun 10:00am – 1:30pm // Tues 6:00pm – 8:00pm

By appt., please contact Meg Seldin, call
301-332-9490 or e-mail megseldin@gmail.com.



CANTOR'S CONCERT

Temple Sinai Music Committee presents

Shards *Putting the Pieces Together*

A Story of Leaving Home, and Finding Home

IN HIS ORIGINAL one-man show, Cantor Evan Kent uses story and song to take us on an odyssey across continents, oceans, and generations. This captivating and poignant musical weaves together Kent's grandparents' perilous journey from Russia to the United States with his own migration from Los Angeles to Israel—all against the backdrop of the complex city of Jerusalem.

Sunday, May 5, 2019 • 4:00 PM

Reception to follow. Tickets: Adults, \$18; 18 + under, \$5

<https://shards.eventbrite.com>



On Sunday, May 5, Cantor Evan Kent brings his original one-man musical, “Shards: Putting the Pieces Together” to Temple Sinai. Music Committee member Kent Allen had a chance to talk with Cantor Kent about how he came to create the show:

The idea came during an especially challenging time for Evan Kent, who had recently turned 50. In addition to that landmark anniversary, he had made aliyah to Israel with his husband after a career in his native U.S. as a Reform cantor, most recently at Temple Isaiah in Los Angeles.

It was 2014. Kent was adjusting to life in his new country. The previous year, he had taken a position as a liturgy and cantorial instructor at Hebrew Union College's campus in Jerusalem, similar to a posting he had had in Los Angeles.

Then troubles in Gaza burst out again, with Israel suddenly on a war footing. It shook him.

“I sort of flipped out, trying to figure this all out,” Kent says. Having left the familiar and comfortable, he was going through a dangerous time but also realized his crisis was personal too. It dawned on him that “I was no longer a synagogue leader.” He needed to explore who he was, who he had been, and where he had come from – going well beyond his present day-to-day existence.

A counselor suggested that he take a stab at “rebuilding my old identity,” as Kent puts it. Find out who he was at his core.

Thus did the “Shards” project begin, as an exploration of his own and his family’s past, putting the pieces back together as one might try of, say, a broken vase.

“We are all sort of sojourners or travelers in life,” says Kent. With spring on the horizon, he notes that journeying is an important element in the Passover story.

With that in mind, Kent sought out the tales and thoughts of those who had been on the path before he arrived. The travelers along his family trail were his grandparents, who migrated from Minsk to Amsterdam to the New World beginning in the first decade of the 20th century. In “Shards,” he takes on the roles of those ancestors, creating monologues for various family members that place the audience intermittently back and forth in time. Besides the other family characters, he of course also plays Evan Kent, who has had his own journey of note. Indeed the Kent family story has come full circle as his life has taken shape in Jerusalem.

His grandparents have been gone in the flesh since the time he was very young, so it was by no means an easy task even to begin framing the show. It took Kent two years’ worth of research and creativity to meld the stories into a cohesive presentation, complete with song, choreography and scenery.

It helped that his background before the launch of “Shards” included significant experience with music and dance that has gone well beyond the rituals of the cantorial profession. Kent is by no means a stranger to the modern and secular stage, and he exploits that talent to great effect in “Shards.” You can take a peek into that part of his life at his website, at <https://evankent.com/video>, where he belts out “Luck Be a Lady” as Sky Masterson in a Jerusalem performance of “Guys and Dolls.”

For now, the focus is on “Shards,” which he performs regularly at temples and elsewhere throughout the United States.

Even today, a few years into the project, the cantor/grandson notes, the family history can vary with each retelling. Yet the familiarity not only remains but strengthens.

“I know my grandparents or great-grandparents better dead than I knew them alive,” Kent says. “Every night I sort of exhume them.”

And in giving voice to forebears whom he describes as “not particularly remarkable,” Kent says the show brings back memories for many in the audience. It is not uncommon, for example, for an attendee to come up to him afterward and say, “That was the story of MY grandparents!”

Shabbat Schedule Guide

1ST Friday: Tot Shabbat Services at 6:00 PM, preceded by a Prozdor (appetizers) at 5:30 PM

1ST Friday: Shabbat Services at 8:00 PM, followed by an Oneg Shabbat

Other Fridays: Shabbat Services at 6:30 PM, preceded by a Prozdor (appetizers) at 6:00 PM

Service descriptions and other information can be found at templesinaidc.org/worship

Looking to sign up for a Shabbat dinner?
Visit templesinaidc.eventbrite.com



Tot Shabbat Services & Participatory Dinners 1st Friday of the month at 6 PM

A Shabbat experience designed for families with infants through pre-K children. Services are followed by participatory dinners with kids' activities and time for parents to chat.

Kehillat Shabbat Services

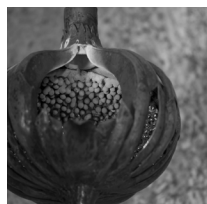
1st & 3rd Saturday of the month at 10:30 AM

These lay-led services offer opportunities to chant a few verses of Torah or Haftarah in a supportive atmosphere. Participants can also sign up to deliver a d'var Torah (analysis of the weekly Torah portion) that leads to a group discussion. The temple provides lunch following services.

Family Shabbat Services

2nd Saturday of the month at 10:30 AM

Using the family-friendly prayer book, *Siddur Ma Tov*, the service alternates between Hebrew and English, introducing Shabbat morning prayers in a meaningful format for all ages. The temple provides lunch following services.



Shabbat Service & Catered Dinner honoring Rimonim Society

Friday, April 12 at 6:30 PM

Help celebrate the Rimonim Society and their investment in Temple Sinai's future. Join us for a festive service and dinner!

To learn more about strengthening Temple Sinai's future through a legacy gift, please contact Ellen Agler at eagler@templesinaidc.org or call (202) 363-6394 ext. 210.

Tuesday, April 2

10:00 AM Rabbi's Class

Wednesday, April 3

7:30 PM Israel's Demographic Challenges & the Future of Pluralistic Judaism in Israel with Larry Wolff

7:30 PM WRJ Mah Jong

Friday, April 5

6:00 PM Tot Shabbat Service & Participatory Dinner

8:00 PM Shabbat Service

Saturday, April 6

Torah Reading: Tazria (Leviticus 12:1-13:59)

9:15 AM Torah Study

10:30 AM Kehillat Shabbat Service & Kiddush Luncheon

10:30 AM Shabbat Service - B'not Mitzvah of Parker & Pepper Margulis

1:00 PM Haftarah Chanting Class

5:30 PM Shabbat Mincha Service - B'nei Mitzvah of Owen Fraize & Tess Kontarinis

6:00 PM Sinaites Event

Monday, April 8

12:45 PM Daytimers

2:15 PM WRJ Mah Jong

Wednesday, April 10

7:30 PM WRJ Mah Jong

Friday, April 12

11:00 AM TSNS Model Seder

6:30 PM Shabbat Service & Catered Dinner honoring Rimonim Society

Saturday, April 13

Torah Reading: M'tzora (Leviticus 14:1 -15:33)

9:15 AM Torah Study

10:30 AM Shabbat Family Service & Kiddush Luncheon

Tuesday, April 16

10:00 AM Rabbi's Class

Wednesday, April 17

7:30 PM Board of Trustees Meeting

7:30 PM WRJ Mah Jong

Thursday, April 18

7:30 PM YAWS Meeting

Friday, April 19 | Erev Pesach

Temple Office Closes at 12 PM. No Shabbat Service.

Saturday, April 20 | Pesach Day 1

Torah Reading: Yom Rishon shel Pesach (Exodus 12:37-42, 13:10)

9:00 AM Passover First Morning Matzoh Brei Cookoff

10:00 AM Passover First Morning Community Festival Service

6:00 PM Community Second Seder sponsored by TSWRJ

Monday, April 22

2:00 PM WRJ Mah Jong

Wednesday, April 24

7:30 PM WRJ Mah Jong

Friday, April 26 | Pesach Day 7

Temple Office Closed.

10:00 AM Passover Concluding Festival & Yizkor Service (Temple Shalom)

6:30 PM Shabbat Service

Saturday, April 27

Torah Reading: Acharei Mot I (Leviticus 16:1-17:16)

9:15 AM Torah Study

10:15 AM Kaddish Minyan

May 2019

Wednesday, May 1 | Erev Yom HaShoah

7:30 PM Erev Yom HaShoah (Holocaust Remembrance) Service

Friday, May 3

6:00 PM Tot Shabbat Service & Participatory Dinner

8:00 PM Shabbat Service & Festive Oneg: Yom HaAtzma-ut/Israel Celebration

Saturday, May 4*Torah Reading: Acharei Mot II (Leviticus 18:1-30)*

9:15 AM Torah Study

10:30 AM Kehillat Shabbat Service & Kiddush Luncheon

10:30 AM Shabbat Service - B'nei Mitzvah of Anna Shesol & Joshua Teller

1:00 PM Haftarah Chanting Class

5:30 PM Shabbat Mincha Service - B'nei Mitzvah of Sam Fishman & Abigail Koeppel

8:00 PM Theatre Outing: OSLO at Round House Theater

Sunday, May 54:00 PM Cantor's Concert & Reception: *Shards* with Cantor Evan Kent**Monday, May 6**

2:00 PM WRJ Mah Jong

Tuesday, May 7

10:00 AM Rabbi's Class

Wednesday, May 8 | Yom HaZikaron

7:30 PM WRJ Mah Jong

Thursday, May 9 | Yom HaAtzma-ut

10:00 AM Adult Ed: Understanding Anti-Semitism

Friday, May 10

6:30 PM Confirmation Shabbat Service & Catered Dinner

Saturday, May 11*Torah Reading: K'doshim (Leviticus 19:1-20:27)*

9:15 AM Torah Study

10:30 AM Shabbat Family Service & Kiddush Luncheon with participation by Better Together

10:30 AM Shabbat Service - Bat Mitzvah of Ada Hillman

**Theatre Outing: Round House Theatre's OSLO****Saturday, May 4 at 8 PM**

In 1993, unbeknownst to the rest of the world, an audacious husband-and-wife team of Norwegian bureaucrats

assembled a motley band of would-be diplomats from the Middle East to attempt the unimaginable: negotiate peace between Israelis and Palestinians. Operating only through back-channels—in secrecy, and without any official bargaining power—the group struggles to find middle ground as political tensions reach a fever pitch. But at the heart of diplomacy lies empathy, and these peacemakers must rely on the strength of the surprising personal bonds they have forged if they want to succeed. Artistic Director Ryan Rilette helms this thrilling nail biter, based on the true events surrounding the Oslo Peace Accords, that swept the 2016-2017 awards season.

There will be a post-show talkback for our group.

RSVP at templesinaidc.eventbrite.com

Confirmation Shabbat Service**Friday, May 10 at 6:30 PM**

Join our 10th Grade Confirmands as we celebrate their learning at Temple Sinai!

PASSOVER**Nursery School Model Seder****Friday, April 12**

Temple Sinai clergy lead the TSNS community in a lively Passover celebration. Each class is creating its own centerpiece and a Passover story skit board to help share in the telling of the story.

SinaiCares Seder Connections

If you would be interested in joining another Temple Sinai family at their home for a Passover Seder on the first night of Passover, Friday, April 19, please contact Karen Auerbach at kauerbach@templesinaidc.org or call (202) 363-6394. If you need transportation to and from the temple for the Community 2nd Seder on April 20, let us know a week ahead of time.

Religious School Pre-Pesach Brunch and Candy Seder**Thursday April 18, 10 AM-12 PM**

Get ready for Passover in the sweetest way possible!

1st Day of Passover**Saturday, April 20**

9:00 AM Clergy Matzoh Brei Cookoff
10:00 AM Community Festival Morning Service
6:00 PM TSWRJ Community 2nd Seder

7th Day of Passover**Friday, April 26**

10:00 AM Community Festival Morning Service
with Yizkor (at Temple Shalom)

Shabbat Healing Service & Kiddush Luncheon

Saturday, May 23 at 10:30 AM

Please join us at a Shabbat morning services focused on healing our bodies, our souls and our spirits. All are welcome at this contemplative, relaxing and rejuvenating service.

Social Action Recognition Shabbat Service & Catered Dinner

Friday, May 31 at 6:30 PM

Please join us as we honor the many social justice leaders in our congregation and celebrate their work at a joyful Shabbat service. Afterwards, savor a delicious catered dinner and enjoy relaxed conversation with leaders of projects you're interested in. This an opportunity to find out more and reflect on TS's legacy of *tikkun olam*.

RSVP at templesinaidc.eventbrite.com

Kehillat Shabbat

20th Anniversary Celebration

Saturday, June 1 10 AM (note special time)

Celebrate this milestone anniversary with a joyful service and a festive Kiddush lunch.



At Kehillat Shabbat, the temple's twice monthly Shabbat morning "lay-led" service, the dress is informal, the feeling intimate and the experience uplifting. For 20 years, congregants have volunteered to chant Torah and Haftarah,

deliver divrei-Torah, and lead the service in a supportive and encouraging atmosphere. With its comfortable mix of Hebrew and English, Kehillat Shabbat is friendly, accessible, and everyone is welcome!

Cantorial Soloist Robyn Helzner coordinates the services and leads the music. The singing is always spirited and when percussion is present, the room is rocking!

Kehillat Shabbat meets every first and third Shabbat morning, year round, beginning at 10:30 AM in the Bet Am. For more information and to receive monthly reminders, e-mail rhelzner@templesinaidc.org.

Lunch will be catered by New Course Catering. New Course provides the highest quality food and service while offering hands-on culinary arts training to homeless and chronically unemployed men and women.

RSVP at templesinaidc.eventbrite.com

Sunday, May 12

8:00 AM Tricia Davis 5k Run/Walk for Sinai House

Monday, May 13

12:45 PM Daytimers

Tuesday, May 14

10:00 AM Sinai Reads: People of the Book Club

Wednesday, May 15

7:30 PM WRJ Mah Jong

Thursday, May 16

10:00 AM Adult Ed: Understanding Anti-Semitism

Thursday, May 16

7:30 PM TSWRJ Annual Meeting

7:30 PM YAWS Meeting

Friday, May 17

6:30 PM Shabbat Service (with music by MMC)

Saturday, May 18

Torah Reading: Emor (Leviticus 21:1-24:23)

9:00 AM Sinaites Year End Event

9:15 AM Torah Study

10:30 AM Kehillat Shabbat Service with Percussion & Kiddush Luncheon

5:30 PM Shabbat Mincha Service - B'nei Mitzvah of Samuel Kolton & Elijah Sobel

Monday, May 20

2:00 PM WRJ Mah Jong

Wednesday, May 22

7:30 PM Annual Meeting of the Congregation

Thursday, May 23 | Lag BaOmer

10:00 AM Adult Ed: Understanding Anti-Semitism

Friday, May 24

6:30 PM Shabbat Service

Saturday, May 25

Torah Reading: B'har (Leviticus 25:1-26:2)

9:15 AM Torah Study

10:30 AM Shabbat Healing Service & Kiddush Luncheon

10:30 AM Shabbat Service - Bar Mitzvah of Jacob Gaum

Tuesday, May 28

10:00 AM Final Rabbi's Class & Lunch

Wednesday, May 29

7:30 PM WRJ Mah Jong

Thursday, May 30

10:00 AM Adult Ed: Understanding Anti-Semitism

Friday, May 31

6:30 PM Social Action Recognition Shabbat Service & Catered Dinner

June 2019

Saturday, June 1

Torah Reading: B'chukotai (Leviticus 26:3-27:34)

9:00 AM Torah Study (note time change)

10:00 AM Kehillat Shabbat 20th Anniversary Service & Kiddush Luncheon

10:30 AM Shabbat Service - B'nei Mitzvah of Audrey Ohrenstein & Lily Kaufmann

5:30 PM Shabbat Mincha Service - Bar Mitzvah of Lucas Lopez Forastier

Wednesday, June 5

7:30 PM WRJ Mah Jong

Friday, June 7

6:00 PM Tot Shabbat Service & Participatory Dinner
8:00 PM Shabbat Service with Board Installation followed by a Festive Oneg

Saturday, June 8

Torah Reading: B'midbar (Numbers 1:1-4:20)

9:15 AM Torah Study
10:30 AM Shabbat Service - Bar Mitzvah of Benjamin Mannes
5:30 PM Shabbat Mincha Service - Bat Mitzvah of Ailish Learsy

Sunday, June 9 | Shavuot

10:00 AM Shavuot Festival Service & Kiddush Luncheon

Wednesday, June 12

7:30 PM WRJ Mah Jong

Friday, June 14

6:30 PM Shabbat Service

Saturday, June 15

Torah Reading: Naso (Numbers 4:21-7:89)

9:15 AM Torah Study
10:30 AM Kehillat Shabbat Service & Kiddush Luncheon
10:30 AM Shabbat Service - Bat Mitzvah of Alexa Chertkof
5:30 PM Shabbat Mincha Service - Bar Mitzvah of Jacob Sidorczuk

Wednesday, June 19

7:30 PM WRJ Mah Jong

Thursday, June 20

7:30 PM YAWS Meeting

Friday, June 21

6:30 PM Shabbat Service

Saturday, June 22

Torah Reading: B'haalot'cha (Numbers 8:1-12:16)

9:15 AM Torah Study
10:30 AM Shabbat Service - Bat Mitzvah of Hannah Weissman

Wednesday, June 26

7:30 PM WRJ Mah Jong

Friday, June 28

6:30 PM Shabbat Service

Saturday, June 29

Torah Reading: Sh'lach L'cha (Numbers 13:1-15:41)

9:15 AM Torah Study
10:15 AM Kaddish Minyan

Shabbat with Board Installation

Friday, June 7 at 8 PM


Join us as we celebrate Shabbat and honor our new Temple Sinai Board of Trustees and Sinates Board members for the 2019-2020 year. Festive Oneg to follow.

Shavuot Festival Service with Yizkor & Kiddush Luncheon

Sunday, June 9 at 10 AM


On Shavuot, our Jewish communities around the world celebrate the moment Moses received the Torah at Sinai. All are invited to a Shavuot Festival service with Yizkor, which will be followed by a Kiddush Luncheon.

*When someone you love becomes a memory,
the memory becomes a treasure.*



Take control of your destiny with expert guidance
at the Garden of Remembrance. The gift of pre-planning
will give you and your family peace of mind.


Call Ellen Agler at Temple Sinai, 202.363.6394,
or visit www.gardenofremembrance.org.



Garden of Remembrance
GAN ZIKARON MEMORIAL PARK

19 YEARS OF CARING SERVICE AND DEDICATED SUPPORT TO THE
JEWISH COMMUNITY OF GREATER WASHINGTON

Partner Agency of
The Jewish Federation
of Greater Washington



To see our complete calendar including Religious School and Adult Hebrew classes along with committee meetings, please visit our website, templesinaidc.org.



Sinaites & NFTY-MAR

Sinaites Interfaith Event

Saturday, April 6

Join other 8th-12th graders from Temple Sinai as we get to know members from our community!

**NFTY MAR- Spring Kallah
April 25th-28**

Whether it's your first event or your last, join us for the Regional Board elections process, meaningful services, amazing programs, and have a chance to say goodbye to your NFTY-MAR senior class.

Sinaites Election and Year End Event

Saturday, May 18

Elect the 2019-2020 Youth Board, celebrate the end of the school year, and send off our graduating seniors.

To learn more about programming for 8th-12th graders at Temple Sinai, contact Youth Engagement Specialist Kelly Whitehead at kwhitehead@templesinaidc.org.

NURSERY SCHOOL NEWS

WE'VE GOT MAIL!

Perri Iger-Silversmith



Pen Pals were formed from two Jewish nursery schools who are 1,662 miles apart but close in shared Jewish values. Pre-K children in the Madanim (Scientists) class here at TSNS made connections, practiced fine motor writing skills, sounded out words, explored geography and exchanged challah recipes. In addition, they learned that there are other schools all around the country where there are children just like them engaging in Jewish rituals and traditions as a part of writing to their Pen Pals in the Giraffe class at Temple Emanuel in Denver. The idea came about through a collaboration with our current faculty member, Marcie Berul, and a past faculty member, Hannah Gaines, who taught at TSNS before moving to Denver. Below is an excerpt from the teacher's weekly note home to parents:

"Last week, the children each opened up a letter from their very own Pen Pal in the Giraffe Class from Temple Emanuel in Denver. It was so exciting! This week it was time to write back and answer the question asked in the letter. Examples of questions asked included: What is your favorite animal? What is your favorite TV show? What is your favorite

movie? The children worked closely with a teacher to sound out the words to answer the question in their letter. Next, they copied the question they wanted to ask back to their Pen Pal. Having them sound out part of their mail and copy the rest was an intentional decision ~ we wanted the children to feel excited to engage in the process and not to get too overwhelmed by it. Each child also drew a separate picture for their friend. They wrote their Pen Pal's name on the envelope, folded their letter and taped it closed. A lot of motor planning is involved when sending mail!"

Connections

July 30-August 2 at Temple Sinai

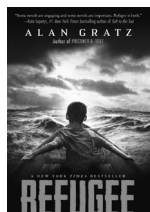
This week-long social and educational summer program is designed for children on the autism spectrum between the ages of 2-5. With the help of the Jewish Federation of Greater Washington and Temple Sinai, campers will participate in fun (and often educational) activities where they will be encouraged to use teamwork to build their social skills. Thanks to a grant from the Jewish Federation of Greater Washington and Temple Sinai's support, this week-long program is free of charge to families (outside of the \$36 non refundable application fee). Please contact Rachel Hynes at rhynes@templesinaidc.org to receive an application form and learn more.

TS LIBRARY

Passing the Torch

For many years, Janis Colton served as chair or co-chair of Temple Sinai's Library Committee. With Janis' leadership, Ruth Polk's work as our librarian, and the cadre of committee members who help with the many activities involved in maintaining our approximately 10,000-volume collection, the Library has played an increasingly integral and prominent role in Temple Sinai's community. Janis has passed the torch to current co-chair Herb Mintz and Library Committee Member, Sue Levine. Our first act as co-chairs is to thank Janis for her incredible contribution to the Library. We will continue to count on her expertise, knowledge, and good judgment as a member of the Library Committee.

Some Recent Acquisitions



Young Adult

Refugee, by Alan Gratz

Resistance, by Jennifer A. Nielson

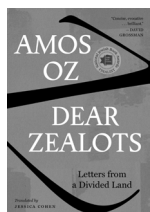
Year of Maybe, by Rachel Lynn Solomon



Adult Fiction

The Novel of Ferrara, by Giorgio Bassani

A Terrible Country, by Keith Gessen

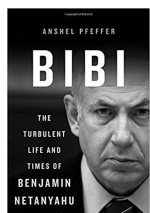


Adult Non-Fiction

Jewish Radical Feminism: Voices from the Women's Liberation Movement, by Joyce Antler

Dear Zealots, by Amos Oz

East West Street, by Phillipe Sands



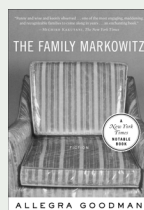
Biographies

Ruth Bader Ginsburg: A Life, by Jane Sherron De Hart as well as others including adult, young adult, and picture books

Bibi: The Turbulent Life and Times of Benjamin Netanyahu, by Anshel Pfeffer
Gal Gadot, by Jill Sherman (young adult)

Passover begins April 19

The Library has a large collection of Haggadot that Temple Sinai members can borrow. Feel free to peruse the collection and try something new this year! We also have books to help you write your own haggadah as well as an extensive collection of books for children.



People of the Book Club Tuesday, May 14 at 10 AM

Join us for our last discussion of the year led by Rabbi Goldstein about *The Family Markowitz*, by Allegra Goodman. All are welcome.

The Library Fund

Our sincere thanks to everyone who has donated to the Temple Sinai Library Fund during the past year. All donations go to support the purchase of books and other media for the Library. If you'd like to make a contribution, you can select the Library through the Donate tab on the Temple's website.

Temple Sinai Librarian

Our librarian, Ruth Polk, is in the library on Mondays, 9:30-2:30 and Wednesdays 9:30-12:30. If you have questions or requests, please contact Ruth at rpolk@templesinai.org or (202) 363-6394 ext. 218. The library is open whenever Temple Sinai is open and operates on an honor system. You can check out books any time. The catalogue is available on the temple website under "Learn" – just click on "Library" and you'll find all our listings.

ADULT EDUCATION



Daytimers

2nd Monday of the month at 12:45 PM

These brown-bag lunch programs are designed to be both social and educational. For further information on the topics covered each month, stop by the TS Library's Daytimers display, located on the shelves to the immediate left as you enter the library.

On April 8, we welcome CNN's Dana Bash for "Women in Politics: Burdens, Barriers and Opportunities."

On May 13, we welcome Dr. Itzik Eshel on the current political climate in Israel.

On June 10, join us for "There Is Nothing Like A Dame: A Musical Celebration of the Great Women of Broadway" with Cantor Laura Croen.

Mazo Education Series

Anti-Semitism:

The Unending Menace

Thursdays, 10:00-11:30 AM | May 9, May 16, May 23, May 30

This four week course will look at the early development and staying power of anti-Jewish sentiments. The course will focus on early Anti-semitism in the time of the disciples of Jesus and in the New Testament, Anti-semitism in Europe in the Middle ages and Reformation, Anti-semitism in the Muslim World and Anti-Zionism and Anti-semitism today.

This class will be taught by Dr. Itzik Eshel. Eshel is on the Judaic Studies faculty at the University of Maryland Baltimore County where he currently teaches courses on modern and contemporary Jewish history.

Studying with the Rabbi

Shabbat Morning Torah Study
Every Saturday at 9:15 AM

A wonderful educational opportunity awaits all who attend weekly Torah Study on Saturday mornings. Led by our clergy, this group focuses on the Torah reading for the week. All are welcome.

Rabbi's Class: Maimonides
1st and 3rd Tuesdays at 10 AM

Maimonides is considered one of the greatest Jewish teachers, philosophers and legal minds ever. This ongoing course explores his clear enumeration and description of the mitzvot and his deeper philosophical writings. All are welcome to join at any point in the year.

Learn more and register for Adult Education classes and programs at templesinaidc.org/learn/adult-education



Book Fair Project

Be a Book Whisperer! Help a child become a reader!

Temple Sinai is once again sponsoring summer book fairs for Highland Elementary in Montgomery County and Browne Education Campus in DC. Temple Sinai covers the costs so that children from low-income families can have enticing books of their own to read over the summer, preventing the all-too-common summer reading slide.



We need volunteers to help the children select books they'll be eager to read.

Browne, May 9 & 10 (Thursday and Friday)

Highland, May 30 (Thursday) & June 3 (Monday)

We will also need assistance packaging the books in June. Exact date TBD.

For more information or to volunteer, contact Debby Litt at debolitt@icloud.com or (301) 652-8562.

SINAI CARES

SINAI CARES VOLUNTEER SPOTLIGHT: BOBBIE NEUMAN

Bobbie Neuman and her husband, Monty, have been members of Temple Sinai for over 40 years. For the past three and a half years, Bobbie has been visiting another long-time Temple Sinai couple, who have also been members for over 40 years. Despite both couples' long-time affiliation with Temple Sinai, they did not know each other before SinaiCares brought them together.

Bobbie became a SinaiCares volunteer because she has always liked to do one-on-one volunteer work. Even when she was in high school, Bobbie would visit seniors with her Girl Scout troop. When Bobbie heard that SinaiCares was looking for volunteers to make visits to people who were feeling isolated, she signed right up.

Bobbie started by making monthly visits to the couple, who were increasingly unable to get out of the house to come to Temple Sinai. At the beginning, visits were challenging for Bobbie, as she had to figure out what to talk about and how to navigate her role. Over the years, however, her visits have increased to every other week as her friendship with the couple has intensified. Often, Bobbie's husband will accompany her on her visits. Politics and family are two conversation topics that have been steady since the start. Bobbie also brings the couple news from the temple, keeping alive a meaningful connection for them as they have become housebound. Bobbie's relationship has evolved to the point that when she visits, she feels like family. The ability to bring some light and cheer into other people's lives has been, in Bobbie's words, "a real gift."

If you are interested in volunteering with SinaiCares, please contact Karen Auerbach at kauerbach@templesinai.org or call (202) 363-6394. In addition to arranging friendly visitors, we deliver challahs, yahrzeit candles and baby welcome baskets.

CONTRIBUTIONS

Temple Sinai gratefully acknowledges your gifts from mid-December to mid-March; those honored are informed of your thoughtfulness. Your contributions support the work of the temple.

ANNUAL CAMPAIGN

Donated By

Ira & Joy Adler, James & Esthy Adler, Ellen & Jeffrey Agler, Kent & Karen Allen, Edward Angel & Susan LaMountain, Anonymous (17), David & Ari Antonelli, Benjamin Bachrach & Elizabeth Langsfeld, Michael & Raanan Baratz, Ruth Bartfeld, Lawrence Baskir & Marna Tucker, Richard Bender & Laura Forman, Noah Benjamin, Susan Berger, Eric & Barbara Bergman, Lois Berkowitz, Rabbi Donald & Norma Berlin, James Berry & Hali Edison, Charlie & Marcie Berul, Nathan Billig & Gail Weinmann, Annie Binder & Michael Kubzansky, Richard & Elaine Binder, Philip Birnbaum, Judy Blickstein, Robert & Helen Borochoff, Nicholas & Carole Brand, Ravelle Brickman, David & Anne Brill, Matthew & Hillary Brill, Michael Brodsky & Aleta Margolis, Sarah Bryer & Evan Gottesman, Martin Burns & Wendy Kahn, Naomi & Clarke Camper, Joseph & Margaret Chachkin, Stephanie Chaplin, Daniel & Jill Chenok, Anthony Ciccone & Robin Glantz, Jon Coleman & Jennifer Cooper, Laura Comay & Arthur Burris,

Robert & Ellen Croog, Timothy Davis, Leon Dayan & Deborah Lewis, Jack Deutsch & Lori Berman, Morris & Nancy Deutsch, Gary & Jean Diamond, Stephen & Jeannette Dubrow, David DuGoff & Victoria Bor, Isabel Dunst, Mary Ann Dutton & D. Jean Veta, Hope Eastman, Sherman Edwards & Melinda Salzman, Tony & Joanie Edwards, Lenore Ehrenberg, David & Debra Eichenbaum, Suzanne Eichhorn, Kim Eisler & Judy Sarasohn, Jay Endelman & Katherine Simonetti, Andrew Engel & Karen Barr, Glenn & Michelle Engelmann, Mark Erlich & Laura Croen, Mike & Doris Feinsilber, Eileen & Douglas Feldman, John & Liz Feldman, Betty Ferber, Harold & Arlene Finger, David & Karen Fleischer, Emil Frankel, Herbert & Barbara Franklin, Robert & Susan Fratkin, John Freedman & Cecily Baskir, Laurence Freedman & Lucy Eldridge, Gary Friend & Tara Sonenshine, Matthew & Lena Frumin, Rita Gaylin, Dana Gershon & Rabbi Jonah Pesner, Frank & Ann Gilbert, Andrew Gilman & Dianne Rudo, Andrew Glickman & Julie Cohen, Nancy Liebermann &

CONTRIBUTIONS

Joe Godles , Ellen Goldmuntz & Jay Slater, Andrew Goldsmith & Miriam Fishman, Mitchell Goldstein & Susan Schiffer, Joan Goldwasser, David & Cathy Goldwyn, Robert Greenberg & Jamie Agins, Peter & Shari Gronvall, Joe & Merna Guttentag, Steven Guttentag & Stacy Winick, Jon Haber & Bonnie Levin, Robert Hartheimer & Nancy Golding, Barry & Robin Hauptman, The Hazan Family, Ellen Heiman, John & Stephanie Hellerman, Rob Hendin & Lauren Aronson, Andrew & Katie Herman, Craig Hillman & Joyce Raynor, Hunter Hogewood & Jamie Yavelberg, Jeremy Horowitz & Nora Gordon, Glen & Lauren Howard, Ann Ingram, James Jaffe & Leslie Sewell, Ken & Debbie Jaffe, Richard Jerome & Elizabeth Rose, Julian & Celia Josepfs, Barbara & John Jost, Carrol Kahn, Marvin & Madeleine Kalb, David & Jan Kaufman, Cameron Kennedy & Rick Desimone, Jeffrey & Susan Kessler, Meyer Kestnbaum & Cynthia Cook, Lawrence & Gayle Klein, Stephen Klein, Norman & Barbara Knopf, Peter Kolker, Peter & Judy Kovler, Kenneth & Audrey Kramer, Marvin & Sally Kranz, Sam Lane, Edward & Stephanie Lebow, Robert & Ellen Leibenluft, Marci Levin, Greg & Kuri Levine, Susan Levine & Leon Fink, Rachel & Ariel Levinson-Waldman, David Leviss & Elena Boley, Michael Levitt & Laura Greenberg, Edward Levy, Alfred Liepold, Michael Lilek & Rosann Wisman, Robert Loesche & Marsha Shaines, Jonathan Lopez & Kimberly Gahan, Robert & Benita Lubic, Eleanor Lurensky, William & Tracy Mann, Andrew & Julie Mannes, Larry & Rochelle Margasak, Amy Mauser, Matthew & Jill McCulloch, Bob McGarrah & Joanne Tanner, Steve Metalitz & Kit Gage, Mitchell & Michele Miller, Herbert & Barbara Mintz, Joshua & Nicole Mintz, Larry Mishel & Ellen Kurlansky, Robert & Anne Molofsky, Kevin Mulshine & Laura Kumin, Mark & Beverly Nadel, Aaron & Jenifer Panner, Robert & Nessa Peters, Thomas Plotz & Catherine Klion, Arnold & Diane Polinger, Richard Pollak, Alan & Patricia Pollock, Israel & Jennifer Puterman, Max Raabe & Hillary Katch, Jamie & Sarah Raskin, Rabbi Fred N Reiner & Susan M Liss, Catherine Ribnick, Steven Riskin & Claudine Isaacs, Rabbi Jonathan & Elizabeth Roos, Theodore & Linda Rosen, Daniel & Florence Rosenblum, Todd Rosentover & Alycia Weinberger, Stephen & Helene Sacks, Nancy Sanders, Rayleona Sanders, Rabbi David Saperstein & Ms. Ellen Weiss, Lester & Joyce Scall, Regina Schatz, Amy Schear, Peter Scher & Kimberly Tilley, The Schiffman Family, Aaron Schuham & Christopher Anders, Mr. Zerek Schwartz & Cantor Rebecca Robins, Harvey & Sherry Schweitzer, George & Susan Schwelling, Jeffrey Seltzer & Karen Rothenberg, Michael Shulman & Jackie Judd, Michael Sibarium & Laura Govoni-Sibarium, Daniel & Maxine Singer, Gertrude Slifkin, Virginia Sloss, David Smith Jr. & Ilene Weinreich, Allen & Susan Snyder, Lafe Solomon & Catherine Crockett, Helen & Daniel Sonenshine, Marjorie Sonnenfeldt, Seth Speyer & Linda Popejoy, Mark & Kathryn Spindel, Laura & David Steel, Robert & Virginia Stern, Janie Stoll, David Stonner & Anne Schwartz, Drew Sunderland & Jessie Vinik, Michael & Apple Susmann, Ronny & Hannah Tabeka, The Tarnoff Family, Amy Taylor, Barbara Tenenbaum, The Lichtenstein-Tom Family, Nelly Urbach, The Usher-Rifkin Family, John K. Villa & Ellen Ann Edwards Villa, Bruce Vinik & Ginny Levin, Richard Waldhorn & Jamie Gorelick, Robert Weinberger & Jennefer Hirshberg, Courtney Weiner & Jason King, Gregory & Alison Weingast, Philip West & Barbara Yellen, Matt & Becky Wexler, Barry & Gail Wides, Howard Widra & Beth Redlich, Susan Wildstrom, Mr. Henry Winokur & Rabbi Stephanie Bernstein, John Barker & Anne Witkowsky, Elizabeth Workman & Mark Williams, Frank & Helaine Workman, Chip Wright & Marcy Harrison, Joseph & Lynda Zengerle, Regina Ziegler, Steve Zuckerman & Andrea Stone

In Honor Of

Rabbi Adam Rosenwasser
The Conversion of Courtney Eimerman-Wallace
The Birthday of Suzanne Eichhorn
Jay Sternberg & Family
In Memory Of
Phyllis Greenbaum
Selma Baron
David Ian Cook
D. Leonard Werner

Donated By

Linda & Ken Chaletzky
Andrew Engel & Karen Barr
Lewis David Priven
Mary Ann Sternberg
Donated By
Lisa Colten
Joanna & Mark Goldberg
Kate & Robert Kestenbaum
Michael & Monica Werner

BERNSTEIN RELIGIOUS SCHOOL ENDOWMENT FUND

For the Yahrzeit Of

Joyce Podrow, Bessie Bernstein, & Julie Kline

Donated By

Rabbi Stephanie Bernstein

CANTOR CROEN'S FUND

Donated By

Anonymous

In Appreciation Of

Cantor Laura Croen

Donated By

Anonymous
Stephen Heyman & Susan Steinman

In Honor Of

The Marriage of Roxanne Greenberg & Christopher Wolf
The Bar Mitzvah of Max Lipscomb

Donated By

Robert Greenberg & Jamie Agins
David Lipscomb & Debra Rosenberg
Laurence Wolff & Miriam Daniel
David & Suzy Mayer
Tim, Judy, & Danny Zwerdling (and spouses)

Gerard Daniel
D. Stephen Meyer
Alice Zwerdling

CANTORIAL SOLOIST ROBYN HELZNER'S FUND

In Appreciation Of

Cantorial Soloist Robyn Helzner

In Honor Of

The Baby Naming of Rya Getselman

Donated By

Anonymous

Donated By

Dinah McNamara

ENDOWMENT FUND

In Memory Of

Edward M. Plotkin
Hyman Mendelsohn, Diane Forbes & Irving Rossman

Donated By

Julie & Andrew Mannes
Martin & Syma Mendelsohn

KATHIE RABINOVITZ SINAI CARES FUND

Donated By

Frank & Ann Gilbert

In Memory Of

Marvin Avery Berman, Joyce Greenwald & Harriet Sloane

Donated By

Deborah & Kenneth Jaffe

LIBRARY FUND

In Memory Of

Jean Barrie Kranz & Jack Kranz

Donated By

Marvin & Sally Kranz

CONTRIBUTIONS

MEMORIAL CONTRIBUTIONS FUND

In Memory Of

Helen Adler
Talia Agler
Phyllis Greenbaum
Beulah Lipshaw Alfou
Eugene Bardach
Fulton Harold Katz
Charles Bartfeld & Julius Davis
Elizabeth Gordon Tucker

Elliott Bawden
Phyllis Greenbaum
Etta & Samuel Berenson
Ivan Basch, Sigmund Bergman,
& Janis Paletsky
Edward, Anna G. & Bertha Berkowitz
Isabel Berlin Levy
Arthur Richman
Maxwell & Florence Kotell, Harry,
Beatrice & Fred Binder
Hyman Blum & David Rosenberg
Fannie G. Harkavy
John William Hawkes
Cathryn Kaufmann &
Lawrence Mayer Steinheimer
Myron Silberman, Jacob (Jack)
Finkelstein & Alex West
Ethel Guterwill & Sylvia Chotin
Minnie Mednicki
Samuel Croog
Bernice Rosenberg Deutsch
Mark Rubin & Elka Weizenblut
Benjamin & Rose Eanet
Rose D. & Benjamin Eanet
Samuel Efron
Elaine Hammond
Matilda Eisen
Phyllis Greenbaum
Esther Eisman
Harry Endelman
Diane Engel, Diane Forbes, &
Nancy A. Happ
Daniel Tuman
Millie & Robert Enten
Duncan Fairweather
Mary Heritage
Bertha C. Frankel
Theodore & Edith Fields
Julie Levine
Isabell Braemer
Nedda Fratkan
Mildred H. Wainger
Miriam Feldman Gilbert
Harry Gilman
Benjamin & Mary Glassman
Frances Annenberg, Albert
Hartheimer, & Dr. Irvin Golding
Dorothy Goldstein

Lillian Goodman

Donated By

Ira & Joy Adler
Ellen, Jeff, & Adam Agler
Michael & Mary Altschaeff
Cherrill Alfou Anson
Joan, Lisa, & David Bardach
Jodi & Josh Barr
Ruth Bartfeld
Lawrence Baskir &
Marna Tucker
Ben & Allison Bawden
Irja, Peter & Molly Benson
Solomon Berenson
Eric & Barbara Bergman

Lois Berkowitz
Seth Berlin & Susan Mayer
Marc & Elaine Berman
Richard & Elaine Binder

Samuel & Phyllis Blum
Judith H. Bor
Helen Hawkes Borochoff
Nick & Carole Brand

Ravelle (Silberman) Brickman

Arthur & Betsy Chotin
Leonard & Evelyn Coburn
Robert & Ellen Croog
Morris & Nancy Deutsch
Stephen & Jeannette Dubrow
Joseph Eanet
Patricia Eanet & Mikel Frazee
Marc Efron
Suzanne Eichhorn
Bruce Eisen
Sharon Eisenberg
Babs Eisman
Jay Endelman
Andrew Engel & Karen Barr

Glenn & Michelle Engelmann
Larry Enten & Judy Schlosser
David & Jane Fairweather
Elizabeth Farquhar
Leslie & Hannah Fein
Ray & Sharon Fields
Sue Levine & Leon Fink
Barbara & Herb Franklin
Robert & Susan Fratkan
Robin B. Gerber
William Gilbert & Family
Andy Gilman & Dianne Rudo
Leonard & Cynthia Glassman
Robert Hartheimer &
Nancy Golding
Mitchell Goldstein, Susan
Schiffer & Samuel Goldstein
Nancy Goodman

Ira H. Gordon
Barbara Greenberg & Martin Agins
Betty & Albert Greenberg
Bess Gross & Rabbi David H. Wice
Norman Levin
Stuart Shaines

David Hauptman
Steven Agresta
Marty Hendin
Henrietta Honig
Betty Felton & John Ingram
Robert Liss & Myles Charles Kaye
Harold L. Jellinek M.D.
David Kahn
David Kahn
Bella Kalb
Naomi Kaminsky
Deborah Zelizer Kaplan
Adrienne Kaufman
Stuart Shaines
Faye Kamen Klitzman &
Morton S. Lissner
Marjorie Cantwell
Ann Kolker
Irving Reich
Ruth C. Green & Sabrina Kranz
Lillian Kriss
Lillian & Julian Mishel
Alice Kurss
Murry Kurss
Eva W. Laudrey
Dorothy & Nathan Adler
George M. Haber, M.D.
Sonia Levin
Beatrice Ginsburg
Benjamin Levine & Franya Lichtman
Kitty Beyer & Benjamin Beyer
Seth Liston Liepold
Phyllis Greenbaum
Robert Gordon, Edith Gordon,
& Arthur Litt
Isadore George Alk, HM Lubic,
Annie Segal, Rose Lubic, &
Marion Segal Alk
Marion Dolores Acquista
Benjamin Lissner, Helen Haka,
& Etta Helen Brown
Dr. Fulton Katz
George Meer

Joseph Golinker
Ida Bloomberg
Irving J. Neuman & Margery Reed

Robert Phillips & Harriet Mendelsohn
Evelyn Plotnick
Lucille Plotz
Grace Brett
Charles Pommier

Scott Gordon
Robert Greenberg & Jamie Agins
Sally Greenberg
Richard & Carol Gross
Jon Haber & Bonnie Levin
Frank Wright III &
Marcy Harrison
Robin, Barry, Theo Hauptman
Ellen Heiman
Rob Hendin & Lauren Aronson
Rick Honig & Dita Verheij
Ann Ingram
Deborah & Kenneth Jaffe
Jacqueline R. Jellinek
Carrol Kahn
Marty Burns & Wendy Kahn
Marvin & Madeleine Kalb
Irving Kaminsky
Randall J. Kaplan
Haley Kaufman
Mary Kilbourn & Tom Sear
Steve Klitzman &
Justine Lissner
Norman & Barbara Knopf
Peter Kolker
Ken & Audrey Kramer
Marvin & Sally Kranz
Karen Spar & Skip Kriss
Larry Mishel & Ellen Kurlansky
Cheryl Kurss
Kurss/Ruda Family
Estelle C. Ladrey
Arny & Sandy Leibowitz
Jon Haber & Bonnie Levin
Bruce Vinik & Ginny Levin
Alan & Beverly Levy
Elliott & Judy Lichtman
Marian Liebman
Alfred Liepold
Jack & Anne List
Robert & Deborah Litt

Robert & Benita Lubic

Mark Matulef & Dolores Acquista
The Mauser Family

Jaime & Joe McKenna
Cary Meer, Charles, &
Daniel Thomas
Mitchell & Michele Miller
Herbert & Barbara Mintz
Perry Pockros &
Patricia Neuman
Michael & Jill Phillips
The Plotnick Family
Tom Plotz & Cathy Klion
Alan & Pat Pollock
Vivianne Pommier

CONTRIBUTIONS

MEMORIAL CONTRIBUTIONS FUND (continued)

In Memory Of

Phyllis Greenbaum

Frances G. Reiss &
Herbert D. Abraham
Carolyn Meier, Constance
Reitzes & Jack Reitzes
Arlene & George Sazzman

Frank Rich & Robert Seidman
Therese K. Lauterbach
Harold S. Riskin

Irvine Robinson

Martin Peller
Bea Rauner & Bernard W. Friedman
Robert J. Rothstein
Eleanor Sacks
Earl Mazo
Philip Schiff
Carol Schiffman
Phyllis Zeughauser

Mabel Blockstein
Ruth Wachs

Phyllis Greenbaum
Gerald & Miriam Seligman
Phyllis Greenbaum
Eugene Govoni & Palma Govoni

Myron Silberman

Barbara Simons
Milton Slifkin
Clara Nachowitz
Sylvia Stein
Barbara L. Heyman

Dorothy C. Stevens
Meier Manheimer
Henry David Silberthau &
Lorraine Silberthau

David Tabeka
Theodore Tannenwald, Jr.
Martin Tarnoff
Lotta Geffen & Abba Lichtenstein
Mary Z. Trupp
Philip Baskir & Hank Tucker

Gertrude Liss & Gerry Daniel
Harriett Vigersky
Marjorie Edwards, Kitty &
Keeve Brodes, Max Edwards &
Esther Shulman
Edna Vinik
Frances Fishbane

Professor Dora B. Weiner

Donated By

Margaret, Hillary, & Ben
Poore
David & Jo Ann Reiss

Jim & Jody Reitzes

Alan Rhinesmith &
Ellen Sazzman
Anadel Rich
Jane Rifkin
Steve Riskin &
Claudine Isaacs
Rachel, Orli, Heidi, &
Stephanie Robinson
Linda & Ted Rosen
Flo & Dan Rosenblum
Fran Rothstein
Steve & Helene Sacks
Reggie Schatz Mazo
Philip D. & Janis B. Schiff
The Schiffman Family
George Schlossberg &
Barbara Zeughauser
Sandra Schwarzbart
Sherry Weissman
Schweitzer
Bernard R. Segal
Gary & Caryn Seligman
Betty Shapiro
Michael Sibarium &
Laura Govoni-Sibarium

Josh Bowers &
Jennifer Silberman
Claudia Simons
Gertrude Slifkin
The Steel Family
Stephen Stein & Lisa Happ
Steve Heyman, Sue
Steinman & Madeline Heyman
David Stevens
Janie Stoll
Kathy & David Strom

Ronny & Hannah Tabeka
Selma P. Tannenwald
The Tarnoff Family
Tom & Lichtenstein Family
Philip Trupp
Lawrence Baskir &
Marna Tucker
Debbie & Henry Tyrangiel
Vigersky Family
The Villa Family

Bruce Vinik & Ginny Levin
Raina Fishbane &
Chuck Walker
The Weiner Family

Robert Weinreich
Dorothy Cohen
Jeannette Cooper Nichols
Ruth Harrison
Howard Cohen
Clem Weissman & Jack Chlopak

Ilene Weinreich
Philip West & Barbara Yellen
Marshall & Joan Wolff
Marcy Harrison
Phil West & Barbara Yellen
Matthew Zaft & Erin Chlopak

MUSIC FUND

Circle of Music Lovers:

Ellen & Jeffrey Agler, Kent & Karen Allen, Anonymous, Joan
Bardach, Elaine & Richard Binder, Nicholas & Carole Brand,
Ravelle Brickman, David & Anne Brill, Naomi & Clarke Camper,
Charlene Barshefsky & Ed Cohen, Robert & Ellen Croog, Dr.
Robert Danner & Ms. Ann Kappell Danner, Sherman Edwards
& Melinda Salzman, Suzanne Eichhorn, Dr. Andrew Engel &
Ms. Karen Barr, Glenn & Michelle Engelmann, Cantor Laura
Croen & Mark Erlich, Dr. Daniel H. Framm & Myra F. Framm
RN, CNS, Richard & Carol Gross, Richard Honig & Dita Verheij,
Ann Ingram, Madeleine & Marvin Kalb, Jeffrey & Susan Kessler,
Stephen Klein, Skip Kriss & Karen Spar, Arnold & Sandra
Leibowitz, Rebecca Leigh, Marci Levin & Joel Resnick, Esther
Lipman, Robert McGarrah & Joanne Tanner, Steve Messner
& Liz Prelinger, Herbert & Barbara Mintz, Larry Mishel & Ellen
Kurlansky, Kevin Mulshine & Laura Kumin, Nancy Olins, Norman
Ornstein & Judith Harris, Thomas Plotz & Catherine Klion,
Catherine Ribnick, Michael & Marilyn Barth, Rachel Robinson,
Elizabeth & Rabbi Jonathan Roos, Stephen & Helene Sacks, Dr.
Nancy Sanders, Amy Schear, Ronald Schechter & Susan Gilbert,
Sandra Schwarzbart, Emma & John Sesay, Gertrude Slifkin, Janet
Shatz Snyder, Allen & Susan Snyder, Lafe Solomon & Catherine
Crockett, Robert & Virginia Stern, Dr. David Stevens & Ms. Linda
Wymbs, Michael & Allison Tierney, Philip West & Barbara Yellen,
Barry & Gail Wides, Susan Winawer, Peter Winkler & Barbara
Kraft, Mr. Henry Winokur & Rabbi Stephanie Bernstein

In Appreciation Of
Cantor Laura Croen

Donated By
Kenneth & Linda Chaletzky
Donald Fishman &
Sonya Schwartz

In Honor Of
Adira Croen
63rd Wedding Anniversary of
Sumner & Phyllis Myers

Donated By
Evan Croen & Rachel Croen
Arnold & Sandy Leibowitz

In Memory Of
Bella Kaplunova

Donated By
Emma & Noel Sesay

NURSERY SCHOOL FUND

Donated By

Linda K. & Harold Z. Friedman Family Philanthropic Fund

In Honor Of

Mr. Adam Berman &
Berman Enterprises

Donated By

William & Linda Quinn

In Memory Of

Nancy Happ
Muriel Bonder

Donated By

Anonymous
Carol & Stephen Bluestone

CONTRIBUTIONS

PROJECT MENSCH FUND

Donated By

Jon Coleman & Jennifer Cooper, Peter & Susan Keisler

In Appreciation Of

Rabbi Adam Rosenwasser

Donated By

Kenneth & Linda Chaletzky

RABBI EUGENE LIPMAN SOCIAL ACTION TZEDAKAH FUND

In Appreciation Of

Ron Klain

In Honor Of

Ronald Merrill

The Marriage of Dr. Barry Merrill

& Mrs. Michele Gardiner

Martin & Syma Mendelsohn

In Memory Of

Nancy Happ

Herman Travis

Mr. Eugene Bardach

Rabbi Eugene Lipman, Mary

Menbrand Marcuson &

Rosa Hillenbrand

Donated By

Daytimers Committee

Donated By

Gail Fleder

Suzan & Barry Friedman,

Norman & Barbara Knopf

Alice Ribbens

Donated By

Anonymous

Rita Gaylin

Elaine & Fred Gillespie

Esther Lipman

RABBI GOLDSTEIN'S FUND

Donated By

Stephen Wolk & Frances Rothstein

In Appreciation Of

Rabbi Hannah Goldstein

In Honor Of

The Bat Mitzvah of Brooke Fuld

The Engagement of

Rabbi Goldstein

The Bar Mitzvah of Max Lipscomb

Donated By

Anonymous

Donated By

Amy Kurtz & Joseph Fuld

Marci Levin & Joel Resnick

David Lipscomb &

Debra Rosenberg

Donated By

Anne Falk

Loren & Sydney & Peter Moor

In Memory Of

Meredith Janda

Janice Lipsen

RABBI EUGENE LIPMAN SCHOLAR-IN RESIDENCE FUND

For The Yahrzeit Of

Jack & Vickie Marcuson

Donated By

Esther Lipman

RABBI ROOS'S FUND

Donated By

Elaine Greenstone

In Appreciation Of

Rabbi Jonathan Roos

Donated By

Anonymous, Gilbert &

Marjorie Geldon, Stephen

Heyman & Susan Steinman

Donated By

Larry Wolff & Miriam Daniel

Richard & Carol Gross

Donated By

Joseph Sternlieb &

Linda Singer

John & Phyllis Wimberly

In Memory Of

Gerard Daniel

Sophie Salzer Wice

In Support Of

Social Justice

Furloughed Workers

RABBI ROSENWASSER'S FUND

Donated By

Elaine Greenstone, Jonathan Kelinson

In Appreciation Of

Rabbi Rosenwasser

Koss

In Honor Of

Audrey Bennett

In Memory Of

Pauline Stein

Donated By

Richard Goldstein & Deborah

Koss

Donated By

Steven Bennett & Erin Loubier

Donated By

Linda Stelzer

RELIGIOUS SCHOOL FUND

In Memory Of

David Iselin

Nellie Edwards

Donated By

Lauren & Howard Iselin

The Villa Family

RITUAL OBJECTS & PRAYER BOOKS FUND

In Memory Of Leesa Fine

Donated By

Kent Allen, Ellen & Michael Cronin, Ellie Flyer, Rita Gaylin, Winnie Hahn, Leslie Hall, Todd Halpern, Deborah & Kenneth Jaffe, Barbara & John Jost, Carol A. Kachadoorian, Rebecca Kapell Leigh, Haley Kaufman, Ginny Levin, Martin & Syma Mendelsohn, Steven Metalitz & Kit Gage, Robert Molofsky, Elaine Parker, Dan Rosenblum, Susan Schiffer, Lafe Solomon, Marjorie Sonnenfeldt, Paulis Waber, Frank Wright III & Marcy Harrison

SINAI HOUSE

Donated By

Ed, Susan, Brian, & Jane Angel, Anonymous, Robert & Helen Borochoff, David & Rita Brickman, Maurice & Ruth Burg, Jeffrey Colman & Ellen Nissenbaum, Walde Diabate, Andrea DiLorenzo, Edith DuGoff, David DuGoff & Victoria Bor, Tony & Joan Edwards, Susan & Mark Ginsberg, Nora Gordon & Jeremy Horowitz, Daniel Gordon, Kevin & Laura Hardy, Daniel S. Koch & Leah Brasch, Selma Kumin, Robert & Ellen Leibenluft, Nancy Liebermann & Joe Godles, Robert & Deborah Litt, Stephen Messner & Elizabeth Prelinger, Steven Metalitz & Kit Gage, Steven Riskin & Claudine Isaacs, Mark & Lenette Snyder, Jan Solomon & Kenneth Simonson, Laura & Jack Summer, Margaret, Rose, & Paul Sussmann

In Honor Of

Debbie Jaffe

Jack & Flora Kepniss

Amy Schear

Laura Kumin's Birthday

In Memory Of

Joan & Shelley Linderman

Joyce Greenwald

D. Leonard Werner

Stuart Shaines

In Support Of

Margaret, Paul, & Rose

Sussmann's Fundraiser

Donated By

Matthew Jaffe

Matthew & Julia Kepniss

Judith & Lester Lieberman

Michael & Jill Phillips

Donated By

Michael Linderman

Meredith Mickelson

Michael & Monica Werner

Barry & Gail Wides

Donated By

Jay Lord & Ruth Charney

Karen Lord, Rabbi Jonathan

Roos's Discretionary Fund,

Michael & Apple Sussmann,

Judy Sussmann, Michelle

Sussmann

GET INVOLVED

Temple Sinai is a community that values the active engagement of members in leadership and community-building. Committees, Task Forces, and Program Groups work in partnership with staff to help shape the direction of temple life and to engage members with particular interests and skills. Contact a liaison below to learn about how you can get involved:

LIAISON

COMMITTEE

David Wessel
wessel.sinai@gmail.com
 (202) 244-7118

Administration We provide guidance regarding office functions and general management of the congregation working in close coordination with the Executive Director.

Susan Schiffer
susanschiffer@hotmail.com
 (202) 966-3947

Archives We preserve the history of Temple Sinai by collecting and organizing its documents and photographs. We welcome new volunteers and are especially interested in finding people to research and write about the history of Temple Sinai.

Marta Goldsmith
marta.v.goldsmith@gmail.com
 (202) 966-1306

Building & Grounds We oversee the repair and maintenance of the physical plant and grounds, and ensure adherence to environmental "green" principles.

Ted Rosen
gted666@gmail.com
 (301) 530-3403

Cemetery We coordinate the sale and marketing of Temple Sinai section at Garden of Remembrance Cemetery.

Ron Merrill
RNL.Merrill@aol.com
 (301) 365-0894

Daytimers We plan monthly lunch-time programs and speakers, giving congregants opportunities for socializing and providing them with new insights on a variety of topics.

Seth Speyer
sethspeyer@aol.com
 (202) 244-8447

Development We work closely with Development staff, the Clergy and the Executive Director to create and oversee a plan for raising needed funds for temple operations and designated strategic priorities through philanthropic contributions and support.

Deborah Lewis
deborahjlewis@starpower.net
 (202) 255-6806

Finance, Audit & Investment We act on behalf of the Board of Trustees to oversee management of temple finances, including the annual audit and investment decisions, making regular reports to the board to support the Board's fiduciary responsibilities.

Regina Ziegler
zieglerrg@gmail.com
 (301) 530-7607

Green Team We develop environmentally conscious improvements at Temple Sinai and encourage similar commitments at the individual and community levels. We have also established a network to inform members about environmental programs, challenges, and opportunities at the local, regional, national, and global level as well as facilitate and coordinate action.

Robyn Miller-Tarnoff
robymnt@comcast.net
 (301) 320-4491

Israel Affairs We help Temple Sinai engage in dialogue about Israeli current events in ways that reflect and respect the diverse perspectives within the congregation while also affirming Reform Judaism's position of support for the ideals upon which Israel was founded.

Mindy Garfinkel
mindy20814@gmail.com
 (301) 530-5228

Sue Levine
levsue@gmail.com

Library We work to maintain and expand our collection of Jewish materials for congregants of all ages, assisting in strengthening and enhancing our Jewish knowledge and identity.

Herb Mintz
mintzh@comcast.net
 (301) 983-6651

LIAISON

Jill Chenok
chenokj@gmail.com
(301) 652-2941

Andrew Mannes
amannes@gmail.com
(301) 656-5552

Stephanie Lebow
lebow.stephanie@gmail.com
(202) 363-7327
Myra Weinberg
myrafrances54@gmail.com
(301) 320-5365

Julia Kepniss
julialichtman@hotmail.com
(301) 215-7395
Julius Weiss
juliusbweiss@gmail.com
(202) 686-5359

Deborah Eichhorn
deichhorn111@msn.com
(301) 657-2760

Mike Raibman
mikeraibman@gmail.com
(301) 915-0080

Laura Govoni-Sibarium
lgovsib@comcast.net
(301) 588-4435

Amy Schear
aishear@starpower.net
(202) 966-5235

Glenn Engelmann
glenn.engelmann@gmail.com
(202) 450-5716

Marsha Shaines
marsha.shaines@gmail.com
(301) 946-1482

Rita Brickman
rita_brickman@verizon.net

COMMITTEE

Membership We celebrate new members and honor long-time members at our Member Celebration Shabbat each year. We personally deliver new members a Shabbat welcome bag, plan and organize small group gatherings throughout the year, and provide outreach to prospective members.

TSMRJ We coordinate a variety of activities designed to serve Jewish men and the temple community, including educational events, social events, and support for temple holiday services.

Music We work with Senior Cantor Laura Croen to bring a wide range of vibrant musical programs, along with related festive dinners and onegs, to our community.

Nursery School We work with the Nursery School Director to review and establish policy, support the Nursery School and the Nursery School Parent Association.

Religious School We work with the Director of the Religious School to review and establish school policies and support the educational program, teaching staff, and Director.

Ritual We work with clergy to review ritual policies and practices for Shabbat, High Holy Day and festival services, and life cycle events.

SinaiCares We provide support to members at times of illness, loss, hardship and celebration. We use volunteers to visit members and to deliver challahs, yahrzeit candles and baby baskets and we arrange transportation for members to Temple Sinai.

Sinai House We oversee the work of Sinai House, which provides housing at Sinai House for four homeless families, including children. Located in NW Washington, DC, Sinai House was purchased by the Temple Sinai Assisted Housing Foundation.

Social Action We coordinate social action programming based on collaboration with clergy and Board leadership reflecting priorities identified by the membership. We formulate positions on critical social justice issues for Temple Sinai and develop and implement local strategies to work toward achieving them.

Strategic Planning We oversee development and implementation of the Strategic Plan and report progress to the Board and the Congregation.

TSWRJ We sponsor educational, social action and study programs on topics of interest to Temple Sinai families, and support TS youth through scholarships and gifts to students. We also operate the congregation's Judaica Shop and the yearly Chanukah Mart and organize the community's Second Seder.

RITUAL STAFF & DIRECTORS

Jonathan Roos

Senior Rabbi

jroos@templesinaidc.org

Adam Rosenwasser

Associate Rabbi

arosenwasser@templesinaidc.org

Hannah Goldstein

Associate Rabbi

hgoldstein@templesinaidc.org

Laura Croen

Senior Cantor

lcroen@templesinaidc.org

Rebecca Robins

Cantor Educator

rrobins@templesinaidc.org

Robyn Helzner

Cantorial Soloist

rhelzner@templesinaidc.org

Fred Reiner

Rabbi Emeritus

frednreiner@gmail.com

Mindy Portnoy

Rabbi Emerita

breenport@gmail.com

Ellen Agler

Executive Director

eagler@templesinaidc.org

Perri Iger-Silversmith

Nursery School Director

TSNSdirector@templesinaidc.org



TEMPLE SINAI

— WASHINGTON DC —

3100 Military Rd NW | Washington DC 20015 | templesinaidc.org | 202.363.6394